

VISION

ILLUMINATE YOUR WORLD



WELCOME TO OUR VISION

VISION have been creating an advanced portable battery powered lighting range for over ten years. We have built a strong reputation for providing industry-leading light units that are tough, powerful, reliable and stylish.

A product range that outshines the competition.

At our core is a product range that is based on unrivalled portable battery powered lighting for professionals in all areas of industry.

With our continued investment in LED lighting technology and the advancement of COB (Chip on Board) we remain at the forefront of the lighting industry.

No matter which VISION product you choose, inspection lights, head torches or heavy-duty work lights, you can be assured that you will be using a product that has been designed to make your life easier and more productive in the working environment.

New Product Lines

We are delighted to announce that our range has recently been expanded and we now offer a portable solution to cover an even broader range of applications.

Lithium Power

Powering our lighting range is the latest generation of lithium batteries. This type of battery is better for the environment than conventional disposable batteries. We ensure that our supply chain minimises the environmental footprint of all our manufacturing processes.

Taking our environmental responsibilities further, our new range of packaging has been carefully designed to be 100% recyclable and printed on carbon balanced card and paper. Wherever possible we use 100% vegetable inks. We are even using space saving computer aided design systems to maximise container volumes.

VISION, illuminate your world with us.

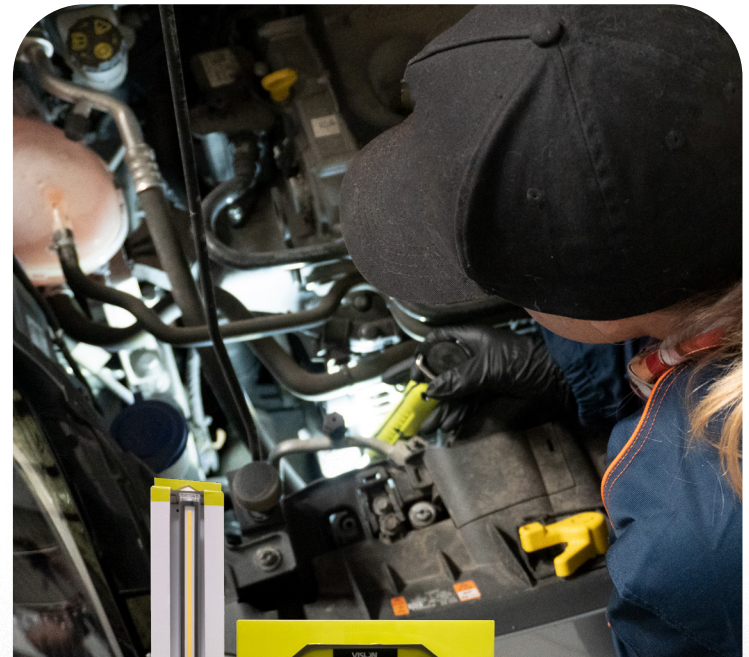


CONTENTS

COB HAND LAMP (EHL302) 1000 Lumens of white light.....	4
SMD COMPACT HAND LAMP (EHL301) 1000 Lumens Plus 3W UV Torch	6
COB SLIMLINE INSPECTION LAMP (EHL303) 800 Lumens Plus 150 Lumens Torch	8
LED MOTION SENSOR HEAD TORCH (ETL201) 350 Lumen adjustable focus beam	10
COB HEAVY DUTY WORK LIGHT (EWL102) 2800 Lumens with Rear Charging Powerbank	12
ZOOM FOCUS LED MINI WORK LIGHT (EWL100) 1800 Lumens from 20W COB LED	14
COB SLIMLINE INSPECTION LAMP (EHL305) LED modes: 500, 250 & 50 Lumens.....	16
SMD FLEXIBLE MAGNETIC HAND LAMP (EHL300) 300 Lumens of cool white light.....	18

VISION

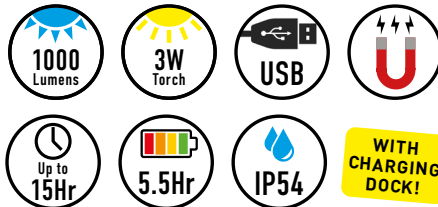
vision-lights.co.uk



COB HAND LAMP & CHARGING DOCK

EHL302

- COB lamp : 10W 1000 Lumens of white light.
- 3W LED torch offering 220 Lumens of white light
- Heavy duty body made from aluminum, PC & rubber.
- Integrated hook & powerful rear magnets
- Comes with wall mountable docking station, micro USB charging lead, USB plug & car adaptor - charging time 8 hrs by charging station, 5.5 hrs by USB charger, operating time 3 hrs on full power.
- Battery - Li-ion 3.7V/5000mAh.
- Waterproof rating - IP54UK

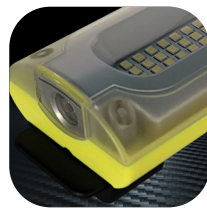
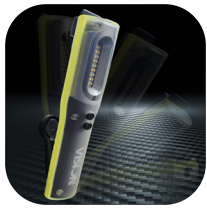


Part No	Qty
EHL302	1













VISION



SMD COMPACT HAND LAMP & UV TORCH

EHL301

- LED lamp : 10W 1000 Lumen of super white light.
- 3W UV torch offering 395 nm.
- Integral belt clip, 360 degrees swivel hook, smart stand with strong magnet & UV torch in the head.
- Comes with micro USB charging lead, USB plug and car adaptor - charging time 6 hours, operating time 3.5 hours on full power.
- Battery - Li-ion 3.7V/5000mAh.
- Waterproof rating - IP54

				
				
Part No		Qty		
EHL301		1		



COB SLIMLINE INSPECTION LAMP & TORCH

EHL303

- COB lamp : 10W 800 Lumens of white light.
- 2W LED torch offering 150 Lumens of white light
- Integrated magnetic stand and hook which enables the user to position the lamp / torch with precision and accuracy
- Comes with micro USB charging lead, USB plug and car adaptor - charging time 4.5 hours, operating time:
Min 2 hrs - Max 12 hrs
- Battery - Li-ion 3.7V/2500mAh.
- Waterproof rating - IP65UK



VISION

8



800
Lumens



2W
Torch



4.5Hr



Up to
12Hr



USB



IP65

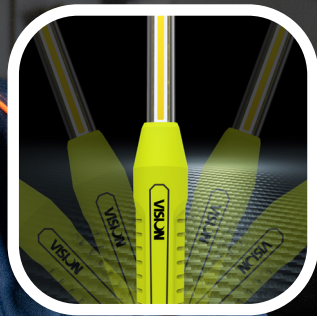


Part No

EHL303

Qty

1







350lm LED MOTION SENSOR HEAD TORCH

ETL201

- LED lamp : 5W 350 Lumen adjustable focus beam which is operated by on/off switch or by motion sensor
- Adjustable head strap with additional directional plate offering fixed lighting for precision and accuracy
- Comes with micro USB charging lead, USB plug and car adaptor - charging time 2.6 hours, operating time up to 30 hours on full power
- Battery - Li-ion 3.7V/1400mAh
- Waterproof rating - IP65UK



**WITH
MOTION
SENSOR!**



Part No Qty

ETL201 1



VISION



VISION COB HEAVY DUTY WORK LIGHT & POWERBANK

EWL102

- COB lamp: 30W 2800 Lumens.
LED colour temperature - Approx 6500K
- Rear charging powerbank -
charger output 5V max.
- Adjustable rear stand that can be wall
mountable
- Comes with micro USB charging lead, USB
plug and car adaptor - charging time 6 hours,
operating time up to 5 hours
- Battery - Li-ion 7.4V/4400mAh.
- Waterproof rating - IP54UK



Part No	Qty
EWL102	1

VISION

12





ZOOM FOCUS LED MINI WORK LIGHT

EWL100

- Heavy duty cast aluminium housing - hard wearing in all environments
- 1800 Lumens from 20W COB LED
- Dual mode - 50% / 100% lumen output
- USB Powerbank output socket (5V Max. 2A)
- Wet location use IP54
- Run time up to 6 hours
- Battery power indicator
- Magnetic base (EWL101)
(available separately)



Part No	Qty
EWL100	1
EWL101	1



VISION

15

COB SLIMLINE INSPECTION LAMP/TORCH

EHL305

- 1 m Micro-B USB Cable, 230V mains and 12V DC in-vehicle charging adaptors included.
- Slim 9 mm 2W inspection torch to access tight areas
- 3x COB LED lamp modes: 500, 250 & 50 Lumens
- Run time up to 20 hours
- Strong magnetic base and hanging hook
- Dual flexible folding system
- Battery power indicator



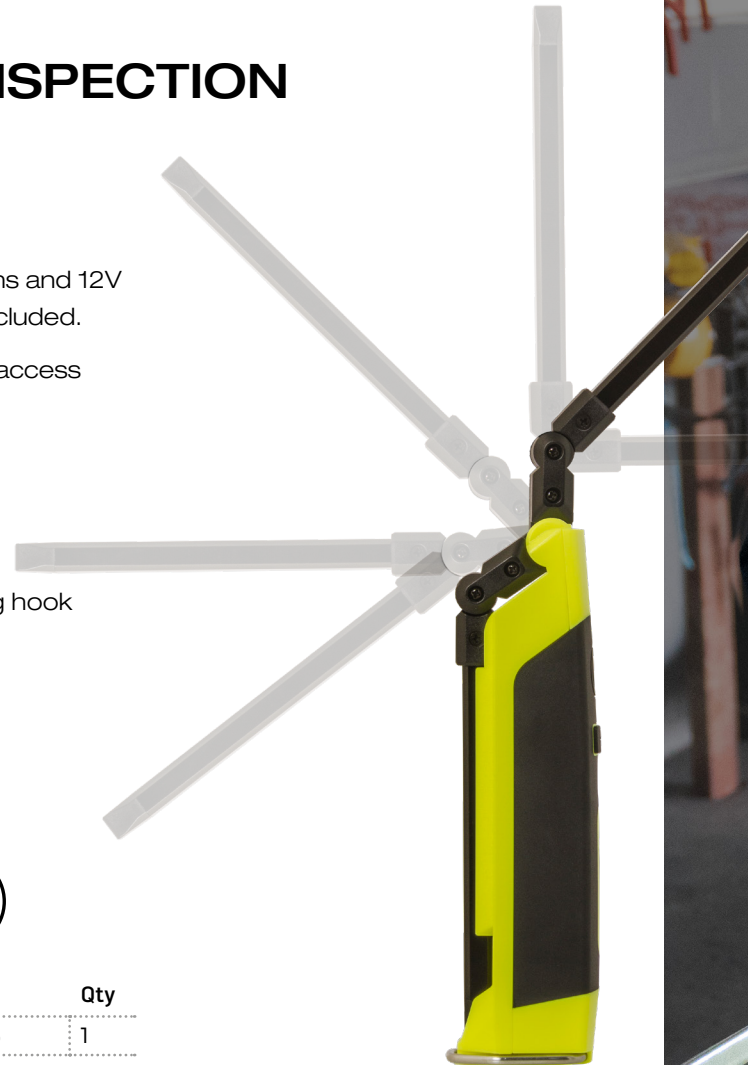
Part No

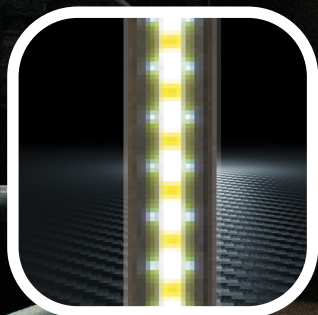
Qty

EHL305

1

16









SMD FLEXIBLE MAGNETIC HAND LAMP/TORCH

EHL300

- 6x 0.5W High Power SMD LED Lamp - Provides 3W/300 Lumens of cool white light
- 1x 1W LED Torch - Ideal when a focused beam of light is required
- USB Charging Plug & Car Adaptor Included
- 2x Integrated Rotating Hooks - Lamp/Torch can be positioned at multiple angles
- 2x Rear Magnets and Flexible Magnetic Base, Position the lamp/torch with precision and accuracy



Part No	Colour	Qty
EHL300B	Black/Blue	1
EHL300R	Black/Red	1
EHL300LR	Hi-Vis Orange	1
EHL300LY	Hi-Vis Yellow	1



VISION

L I G H T I N G



vision-lights.co.uk



PRINTED IN UNITED
KINGDOM ON CARBON
BALANCED PAPER USING
100% VEGETABLE INKS