

GET READY FOR WINTER

workshop warehouse



Extending Snow Shovel

Robust design with extending handle design provides easy storage.

Part No.	Qty	Description
TL8020	1	Snow Shovel



Pallet of White De-icing Salt Large Bags

Ideal for clearing snow or ice from areas with high footfall. Does not contain clay to help reduce the need for cleaning floors as people enter buildings.

Please allow 3-5 days delivery.

Part No.	Pack Qty	Pack Size	Pallet Weight
RS1	40	23.5 - 25 kg	1 Tonne



Pallet of Brown Rock Salt Large Bags

Ideal for preventing ice and snow on paths or driveways. Conforms or exceeds BS 3247: 2011 and is the same product used by councils and highway agencies.

Please allow 3-5 days delivery.

Part No.	Pack Qty	Pack Size	Pallet Weight
RS2	40	23.5 - 25 kg	1 Tonne



3-in-1 Ice Scraper

with squeegee and foam

Part No.	Qty	Description
TL8022	1	3-in-1 Scraper



Heavy Duty 5" Ice Scraper

Soft foam grip handle

Part No.	Qty	Description
TL8021	1	5" Ice Scraper



Part No.	Qty	Size
DSL31	6	750ml
DSL35	12	500ml



Part No.	Qty	Size
SAS1060/2	2	5 Litres



Part No.	Qty	Size
DSL60	2	5 Litres



Body Warmer Pack

Pack contains:
Body Warmer, 3M Thinsulate hat
3M Thinsulate pair of gloves,
Drawstring sports bag

Part No.	Qty	Body Warmer Size
WS458M	1 Kit	M
WS458L	1 Kit	L
WS458XL	1 Kit	XL



DELTA PLUS Thermal Protection Winter Glove

Inside: 100% acrylic gauge 10.
Outside: 100% polyamide gauge 15.
Full latex coating of the hand.
Second foam latex coating on palm and fingertips.

Part No.	Qty	Size
WS325	1 Pair	L
WS326	1 Pair	XL



VISION ILLUMINATE YOUR WORLD

VISION has been creating an advanced portable battery-powered lighting range for over ten years with a reputation for providing industry-leading light units that are tough, powerful, reliable and stylish.

Full details of the complete vision range is now available in a handy new brochure. Order Part Number YCE3.



VISION



NEW FOR 2022



350lm LED Motion Sensor Head Torch

Complete with USB charging lead, mains plug and car adapter.

- LED Lamp provides:
 - 100% position: approx 350LM for 3.5 hours use
 - 50% position: approx 160LM for 7.0 hours use
 - 10% position: approx 35LM for 30 hours use
- Operated by on/off switch or by motion sensor

Part No.	Qty	Description
EHL201	1	Motion Sensor Head Torch

VISION



2,800lm COB Work Light

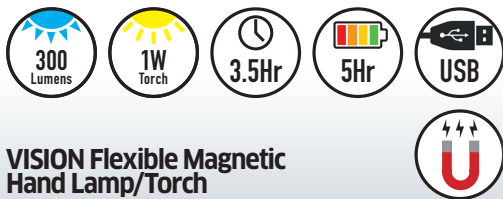
Complete with USB charging lead, mains plug and car adapter.

- LED Lamp provides:
 - 100% position: approx 2.5 hours use
 - 50% position: approx 5.0 hours use
- USB Powerbank output socket 5V Max 1000mA

Part No.	Qty	Description
EWL102	1	Work Light



VISION



VISION Flexible Magnetic Hand Lamp/Torch

230V mains and 12V DC in-vehicle charging adaptors included.

- 6 x 0.5W High Power SMD LED Lamp: 300 Lumens
- Run time 3.5 hours
- 1 x 1W LED Torch
- 2 x Rear Magnets & Flexible Magnetic Base



Part No.	Qty	Colour
EHL300B	1	Black/Blue
EHL300R	1	Black/Red

Part No.	Qty	Colour
EHL300LR	1	Hi-Vis Orange
EHL300LY	1	Hi-Vis Yellow

VISION



NEW FOR 2022

1,000lm SMD Compact Hand Lamp + UV Torch

Complete with USB charging lead, mains plug and car adapter.

- SMD Lamp provides 10W/1000 Lumens of white light
- 3W UV LED Torch provides 395 Lumens of UV light
- Integrated Hook and Stand - lamp/torch can be positioned at a multitude of angles
- 2 x Rear Magnets & Flexible Magnetic Base - position the lamp/torch with precision and accuracy



Part No. Qty Description

EHL301 1 Compact Hand Lamp + UV Torch

VISION



NEW FOR 2022

1,000lm COB Hand Lamp + Charging Dock

Complete with USB charging lead, mains plug and car adapter. Wall mountable.

- COB Lamp provides 10W/1000 Lumens of white light
- 3W LED Torch provides 220 Lumens of white light
- Integrated Hook and stand - lamp/torch can be positioned at a multitude of angles
- 2 x Rear Magnets & Flexible Base - position the lamp/torch with precision and accuracy



Part No. Qty Description

EHL302 1 Hand Lamp + Charging Dock

VISION



NEW FOR 2022

800lm COB Slimline Dimmable Inspection Lamp + Torch

Complete with USB charging lead, mains plug and car adapter.

- COB Lamp provides 10W/800 Lumens of white light
- 2W LED Torch provides 150 Lumens of white light
- Integrated Magnetic Stand and Hook - position the lamp/torch with precision and accuracy



Part No. Qty Description

EHL303 1 Slimline Dimmable Inspection Lamp + Torch

VISION



VISION Slimline COB LED Inspection Lamp

Complete with USB charging lead, mains plug and car adapter.

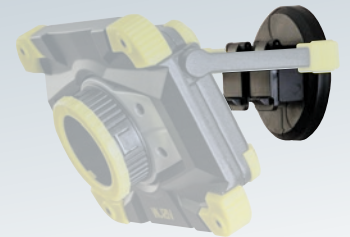
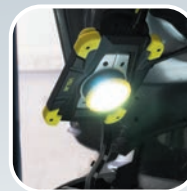
- LED: 5W COB LED, 1W torch, 6000-7000K, Ra. 70
- Lumen and work time:
 - Switch 100% position: 500LM, approx 2.5 hrs
 - Switch 50% position: 250LM, approx 5.0 hrs
 - Switch 10% position: 50LM, approx 20 hrs
- Battery: 3.7V2500mA Lithium battery
- Charge time: approx 5.5 hours
- Dimensions(W/D/H): 3.5 x 4.5 x 32/16.5cm
- Wet/Damp rated: IP20
- Strong magnet and hook in bottom
- Overload protection
- Product weight: 0.30kg

Part No. Qty Description

EHL305 1 Slimline Inspection Lamp



VISION



VISION Zoom Focus LED Mini Work Light

230V mains and 12V DC in-vehicle charging adaptor included.

- 20W COB LED provides 1800 Lumens
- Dual mode - 50%/100% Lumen output
- Run time up to 6 hours
- USB Powerbank - Output socket (5V Max. 2A)
- Wet location use IP54
- Heavy duty cast aluminium housing
- Battery power indicator
- Magnetic base (available separately)

Part No. Qty Description

EWL100 1 Cordless 20W Work Light

EWL101 1 Magnetic Clip-on Base



WINTER ESSENTIALS



Each blade comes complete with seven different connectors to cover the majority of vehicle applications:



IGUANA Universal Jointless Aero Wiper Blades

Each kit is complete with seven, quick and easy to fit connectors to suit the majority of vehicle applications.

- Rubber blade edge is manufactured from a unique natural and synthetic rubber mix, designed to offer quality wiping performance with enhanced durability and life span
- Aero design provides improved performance by reducing wind lift and noise at high speeds
- Manufactured with two tensioned steel strips which apply the whole length of the blade to the windscreen with even, consistent pressure

Part No.	Qty	Length	Part No.	Qty	Length
WIPG13	1 Kit	13" (335 mm)	WIPG24	1 Kit	24" (610 mm)
WIPG14	1 Kit	14" (360 mm)	WIPG25	1 Kit	25" (635 mm)
WIPG15	1 Kit	15" (385 mm)	WIPG26	1 Kit	26" (660 mm)
WIPG16	1 Kit	16" (410 mm)	WIPG28	1 Kit	28" (710 mm)
WIPG17	1 Kit	17" (435 mm)	WIPG30	1 Kit	30" (760 mm)
WIPG18	1 Kit	18" (460 mm)	WIPG32	1 Kit	32" (815 mm)
WIPG19	1 Kit	19" (485 mm)			
WIPG20	1 Kit	20" (510 mm)			
WIPG21	1 Kit	21" (535 mm)			
WIPG22	1 Kit	22" (560 mm)			
WIPG23	1 Kit	23" (585 mm)			



RING Lithium Professional Jump Starter

Ideal for petrol vehicles up to 8.0L and diesel vehicles up to 6.0L, such as motorcycles, cars, 4x4s, vans, commercial vehicles and boats.

- Lithium professional charger with 1500 Peak Amps
- 75% lighter than an equivalent lead acid jump starter
- Multiple safety protections
- Tough build with rubber moulding
- Rapid recharge - 60 seconds from vehicle alternator
- Mains docking station and rechargeable batteries included

Part No.	Qty	Voltage	Wattage	Output
ERPPL700	1	12.8V	8960W	700A



RING High Power Micro Jump Starter

Part No.	Qty	Dimensions	Voltage	Output
ERPPL300	1	31 x 163 x 90 mm	12V	300A



ESSENTIAL HEADLIGHT BULBS



H1 Cap P14.5s

Part No.	Qty	Volts/Watts
EB448	10	12V 55W
EB466	10	24V 70W



H3 Cap PK22s

Part No.	Qty	Volts/Watts
EB453	10	12V 55W
EB460	10	24V 70W



H7 Cap Px26d

Part No.	Qty	Volts/Watts
EB477	10	12V 55W
EB474	10	24V 70W



H4 Cap P43t

Part No.	Qty	Volts/Watts
EB472	10	12V 60/55W
EB475	10	24V 75/70W



Hi-Vis Yellow Vests

Part No.	Qty	Size
WS400	1	M
WS401	1	L
WS402	1	XL



Hi-Vis Orange Vests

Part No.	Qty	Size
WS459L	1	L
WS459XL	1	XL



DELTAPLUS Rain Suit

Part No.	Qty	Size	Chest
WS455L	1 Set	L	52/54
WS455XL	1 Set	XL	56/58
WS455XXL	1 Set	XL	60/62



DELTAPLUS '2 in 1' Hi-Vis Bomber Jacket/Body Warmer

Part No.	Qty	Size
WS452L	1	L
WS452XL	1	XL



Nubuck Leather Hiker Safety Boots

S1P HRO. Also available in Sand colour.

Part No.	Qty	Size UK (EU)
WS55908	1 Pr	8 (42)
WS55909	1 Pr	9 (43)
WS55910	1 Pr	10 (44.5)



Water Resistant Leather Hiker Safety Boots

Part No.	Qty	Size UK (EU)
WS55708	1 Pr	8 (42)
WS55709	1 Pr	9 (43)
WS55710	1 Pr	10 (44.5)

PROCELL®

PROFESSIONAL BATTERIES



BEST SELLER

PROCELL Alkaline Batteries

Dependable power for professional devices.

Part No.	Box of	Size	Volts	Alt. Ref.'s
BAT308	10	AAA	1.5V	(LR03)



BEST SELLER

PROCELL Alkaline Batteries

Dependable power for professional devices.

Part No.	Box of	Size	Volts	Alt. Ref.'s
BAT307	10	AA	1.5V	(LR6)



PROCELL Alkaline Batteries

Dependable power for professional devices.

Part No.	Box of	Size	Volts	Alt. Ref.'s
BAT306	10	C	1.5V	(LR14)



PROCELL Alkaline Batteries

Dependable power for professional devices.

Part No.	Box of	Size	Volts	Alt. Ref.'s
BAT305	10	D	1.5V	(LR20)



BEST SELLER

PROCELL Alkaline Batteries

Dependable power for professional devices.

Part No.	Box of	Size	Volts	Alt. Ref.'s
BAT309	10	9V	9V	(PP3)



INDIVIDUAL BULB STOCK AVAILABLE ON REQUEST

RING 12V Compact Wall Bulb Dispenser Single Boxed Bulbs

Complete with 175 Bulbs. Dimensions (H x W x D): 530 x 550 x 85 mm.

- Eye-catching stand
- Boxed and pre-merchandised with 175 bulbs
- Wall mounted complete with fitting template
- All bulbs are 'E' marked where appropriate
- All bulbs bar-coded

Part No.	Qty	Description
ERU175	1 Set	12V Bulb Wall Dispenser
Contents:	13 x ERB2075	13 x ERB239
	13 x ERB2455	13 x ERB286
	13 x ERB501A	13 x ERB501
	10 x ERB382	10 x ERB955
	10 x ERB382	10 x ERB566
	10 x ERB581	10 x ERB580
	10 x ERB581	10 x ERB582
	8 x ER477	6 x ER448
		6 x ER472



RING H1, H4 & H7 Headlamp 12V Universal Auto Bulb Kit

Supplied in plastic storage box.

- All bulbs are 'E' marked.
- Also contains 10A blade fuses.

Part No.	Qty	Description
EBU027	1	1 Kit
Kit contains:		
	3 x Halogen Headlamps:	ER477 (12V 55W), 472 (12V 55W), ER448 (12V 60/55W).
	5 x Side & Tail Lamps:	ER207 (x2), ER233, ER245, ER434, ER501.
	3 x Stop, Flasher, Reverse Lamps:	ER382, ER581, ER955.
	1 x Stop/Tail Lamp:	ER380. 1 x Fog/Tail Lamp: ER566. 1 x Festoon: ER239.



NEW SUPERSEAL CONNECTOR KITS

Assorted Box of Superseal Connectors

Part No.	Box of
AB520	424 Pieces
6 x 1-way Female. 6 x 1-way Male. 12 x 2-way Female. 12 x 2-way Male. 5 x 3-way Female. 5 x 3-way Male. 4 x 4-way Female. 4 x 4-way Male. 3 x 5-way Female. 3 x 5-way Male. 2 x 6-way Female. 2 x 6-way Male. 180 x Yellow Rubber Seals. 90 x 1.5 mm Female Pin. 90 x 1.5 mm Male Pin.	



6 Piece Kit

Superseal 1-way Kit 6pc

Part No.	Qty	Contacts
ET550	1 Kit	1-way
Contains: 1x 1-way male and 1x 1-way female connector, 1x male and 1x female pin and 2x rubber seals.		



14 Piece Kit

Superseal 3-way Kit 14pc

Part No.	Qty	Contacts
ET552	1 Kit	3-way
Contains: 1x 3-way male and 1x 3-way female connector, 3x male and 3x female pins and 6x rubber seals.		



22 Piece Kit

Superseal 5-way Kit 22pc

Part No.	Qty	Contacts
ET554	1 Kit	5-way
Contains: 1x 5-way male and 1x 5-way female connector, 5x male and 5x female pins and 10x rubber seals.		



10 Piece Kit

Superseal 2-way Kit 10pc

Part No.	Qty	Contacts
ET551	1 Kit	2-way
Contains: 1x 2-way male and 1x 2-way female connector, 2x male and 2x female pins and 4x rubber seals.		



18 Piece Kit

Superseal 4-way Kit 18pc

Part No.	Qty	Contacts
ET553	1 Kit	4-way
Contains: 1x 4-way male and 1x 4-way female connector, 4x male and 4x female pins and 8x rubber seals.		



26 Piece Kit

Superseal 6-way Kit 26pc

Part No.	Qty	Contacts
ET555	1 Kit	6-way
Contains: 1x 6-way male and 1x 6-way female connector, 6x male and 6x female pins and 12x rubber seals.		



Superseal Connector Accessories



Superseal Crimping Pliers - Ratchet Type

- Ergonomically designed handle for ease of use
- Ratchet ensures correct crimping pressure
- Crimp range 0.5mm - 1.5mm²

Part No.	Qty	Description
TL936	1	Ratchet Crimping Pliers



Superseal Terminals

Replacement terminals for Part Nos. ET550, ET551, ET552, ET553, ET554 and ET555.

Part No.	Pack Qty	Size	Type
ET556	100	1.5 mm	Female
ET557	100	1.5 mm	Male



Superseal Yellow Seals

Replacement seals for Part Nos. ET550, ET551, ET552, ET553, ET554 and ET555.

Part No.	Pack Qty	Colour
ET558	100	Yellow

CATACLEAN

Petrol Formula

CATACLEAN Petrol

Improves fuel economy, reduces emissions, restores performance and extends the life of engine and exhaust parts.

- Safe for all petrol and hybrid vehicles
- Protects and maintains catalytic converters

Part No.	Qty	Size
VC250A	1	500ml Bottle
VC250	6	500ml Bottles



CATACLEAN

Diesel Formula

CATACLEAN Diesel

Improves fuel economy, reduces emissions, restores performance and extends the life of engine and exhaust parts.

- Reduces risk of diesel particulate filter (DPF) clogging
- Protects and maintains catalytic converters

Part No.	Qty	Size
VC251A	1	500ml Bottle
VC251	6	500ml Bottles



CATACLEAN

Hybrid Formula

CATACLEAN Hybrid

Improves fuel economy, reduces emissions, restores performance and extends the life of engine and exhaust parts.

- Reduces risk of petrol particulate filter (PPF) clogging
- Protects and maintains catalytic converters

Part No.	Qty	Size
VC252A	1	500ml Bottle
VC252	6	500ml Bottles



NEW DT CONNECTOR KITS

Assorted Box of DT Connectors

Part No.	Box of
AB521	194 Pieces

Kit contains:
2 pin, 3 pin, 4 pin, 6 pin, 8 pin, 12 pin,
plus wedges, locking plates,
blanking stems plus male & female terminals.



8 Piece Kit



DT Connector 2-way Kit 8pc

Part No.	Qty	Contacts
ET560	1 Kit	2-way

Contains: 1x 2-way male and 1x 2-way female connector,
2x male and 2x female pins and 1x male and 1x female wedge.

12 Piece Kit



DT Connector 4-way Kit 12pc

Part No.	Qty	Contacts
ET562	1 Kit	4-way

Contains: 1x 4-way male and 1x 4-way female connector,
4x male and 4x female pins and 1x male and 1x female wedge.

20 Piece Kit



DT Connector 8-way Kit 20pc

Part No.	Qty	Contacts
ET564	1 Kit	8-way

Contains: 1x 8-way male and 1x 8-way female connector,
8x male and 8x female pins and 1x male and 1x female wedge.

10 Piece Kit



DT Connector 3-way Kit 10pc

Part No.	Qty	Contacts
ET561	1 Kit	3-way

Contains: 1x 3-way male and 1x 3-way female connector,
3x male and 3x female pins and 1x male and 1x female wedge.

16 Piece Kit



DT Connector 6-way Kit 16pc

Part No.	Qty	Contacts
ET563	1 Kit	6-way

Contains: 1x 6-way male and 1x 6-way female connector,
6x male and 6x female pins and 1x male and 1x female wedge.

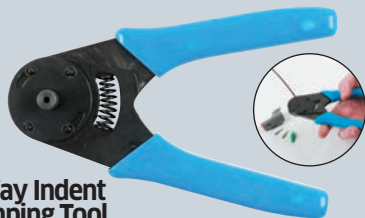
28 Piece Kit



DT Connector 12-way Kit 28pc

Part No.	Qty	Contacts
ET565	1 Kit	12-way

Contains: 1x 12-way male and 1x 12-way female connector,
12x male and 12x female pins and 1x male and 1x female wedge.



4-Way Indent Crimping Tool

Crimping tool for male and female DT terminals.

- 4-way jaw action offers a professional crimp on the terminal
- For cable diameter: 1mm² - 2mm²

Part No.	Qty	Description
TL938	1	DT Connector Pliers

DT Connector Accessories

DT Connector Terminals

Replacement terminals for Part Nos. ET560, ET561, ET562, ET563, ET564 and ET565.

Part No.	Pack Qty	Type
ET566	50	Female
ET567	50	Male

DT Connector Housing Blanks

For use with DT connectors to seal unused openings.

Part No.	Pack Qty
ET568	50

CATACLEAN

FREE 1L JUG with every 5 litre Workshop pack*

Special Formula for all engines

CATACLEAN Workshop

Improves fuel economy, reduces emissions, restores performance and extends the life of engine and exhaust parts.

- Safe for all diesel, petrol and hybrid vehicles
- Protects and maintains catalytic converters

*while stocks last

Part No.	Qty	Size
VC253	1	5L Container



RG TOOLS



Tin of 10 Discs

RG TOOLS 1.0 mm Thin Flat Metal Cutting Discs

Compliant with EN 12413. Suitable for use with stainless steel, mild steel and high grade steel. Supplied in a metal storage tin.

- Free from iron, sulphur and chlorine
- Straight and fast precision cutting

Part No.	Qty	O.D.	O.D. x Thickness x Hole
RG20150	Tin of 10 Discs	4 1/2"	115 x 1.0 x 22.23 mm



NEW SAFETY GLOVE RANGE



Traffi
THE HAND PROTECTION SPECIALISTS

COLOUR CODED SAFETY GLOVE SYSTEM

RED CUT LEVEL
WARNING
LOW CUT PROTECTION
Suitable for lower cut risk tasks only, such as general product handling, warehouse and assembly line work and some low risk construction jobs.

AMBER CUT LEVEL
BE AWARE
MEDIUM CUT PROTECTION
Ideal for second fix construction, mechanical and electrical trades, steel fixing and handling materials with sharp edges.

GREEN CUT LEVEL
SAFE TO GO
HIGH CUT PROTECTION
The best choice for higher cut risk tasks like applying cladding, demolition, steel fabrication and handling glass or sheet metal with cut edges.

CARBON NEUTRAL HAND PROTECTION

Traffi
EN 16350:2014

ASTM ANSI CUT LEVEL **A**

ANTISTATIC

TRAFFI TG1290 X-Dura Antistatic Gloves
Antistatic cut level A PU coated glove.

Part No.	Pack Qty	Size	EN388 Rating
GL12908	10 Pairs	M	4121A
GL12909	10 Pairs	L	4121A
GL12910	10 Pairs	XL	4121A
GL12911	10 Pairs	XXL	4121A

Traffi SUSTAIN

ASTM ANSI CUT LEVEL **A**

BIODEGRADABLE
rPET

TRAFFI TG1900 Microfoam Gloves
Biodegradable cut level A glove made from recycled water bottles.

Part No.	Pack Qty	Size	EN388 Rating
GL19008	10 Pairs	M	4121A
GL19009	10 Pairs	L	4121A
GL19010	10 Pairs	XL	4121A
GL19011	10 Pairs	XXL	4121A

Traffi

ASTM ANSI CUT LEVEL **A**

TRAFFI TG1210 X-Dura Lightweight Gloves
Lightweight cut level A PU coated glove.

Part No.	Pack Qty	Size	EN388 Rating
GL12108	10 Pairs	M	3X21A
GL12109	10 Pairs	L	3X21A
GL12110	10 Pairs	XL	3X21A
GL12111	10 Pairs	XXL	3X21A

Traffi

ASTM ANSI CUT LEVEL **B**

TRAFFI TG3210 X-Dura Lightweight Gloves
Lightweight cut level B PU coated glove.

Part No.	Pack Qty	Size	EN388 Rating
GL32108	10 Pairs	M	4X43B
GL32109	10 Pairs	L	4X43B
GL32110	10 Pairs	XL	4X43B
GL32111	10 Pairs	XXL	4X43B

Traffi

ASTM ANSI CUT LEVEL **C**

TRAFFI TG5210 X-Dura Lightweight Gloves
Lightweight cut level C PU coated glove.

Part No.	Pack Qty	Size	EN388 Rating
GL52108	10 Pairs	M	4X43C
GL52109	10 Pairs	L	4X43C
GL52110	10 Pairs	XL	4X43C
GL52111	10 Pairs	XXL	4X43C

Traffi

ASTM ANSI CUT LEVEL **A**

CARBON NEUTRAL

TRAFFI TG1240 MicroDex LTX Gloves
Carbon neutral cut level A glove with a palm dipped MicroDex Ultra coating.

Part No.	Pack Qty	Size	EN388 Rating
GL12408	10 Pairs	M	4142A
GL12409	10 Pairs	L	4142A
GL12410	10 Pairs	XL	4142A
GL12411	10 Pairs	XXL	4142A

Traffi

ASTM ANSI CUT LEVEL **B**

CARBON NEUTRAL

TRAFFI TG3240 MicroDex LTX Gloves
Carbon neutral cut level B glove with a palm dipped MicroDex Ultra coating.

Part No.	Pack Qty	Size	EN388 Rating
GL32408	10 Pairs	M	4X43B
GL32409	10 Pairs	L	4X43B
GL32410	10 Pairs	XL	4X43B
GL32411	10 Pairs	XXL	4X43B

Traffi

ASTM ANSI CUT LEVEL **C**

CARBON NEUTRAL

TRAFFI TG5240 MicroDex LTX Gloves
Carbon neutral cut level C glove with a palm dipped MicroDex Ultra coating.

Part No.	Pack Qty	Size	EN388 Rating
GL52408	10 Pairs	M	4X43C
GL52409	10 Pairs	L	4X43C
GL52410	10 Pairs	XL	4X43C
GL52411	10 Pairs	XXL	4X43C

workshop warehouse

Helping to maintain industry

All products are subject to availability. E. O. & E.