

# workshop warehouse<sup>®</sup>

*Helping to maintain industry*

## S·A·S Chemicals & Adhesives

Maintenance Spray, Lubricants, Paints & Primers, Threadlockers & Adhesives from S·A·S

## Cordless Power Tools

Professional Power Tools from RG Tools

## Drilling, Cutting & Grinding

Power Tools, Drills, Bits & Safety Equipment

## VDE Tool Sets & Hand Tools

Manufactured to IEC 60900 for live working up to 1000V AC / 1500V DC from RG Tools

## EV Service Bundles

Getting you started in the safe maintenance of electric vehicles

## Disposable Gloves

An exclusive and extensive brand of premium quality gloves for professionals in all industries from OnHand

## Plus much more ...

Wheel Nut Removal	2	S·A·S Paints, Primers & Valeting	8	Vehicle Additives	17
Wheel Balancing	3	S·A·S Threadlockers & Adhesives	9	OnHand Disposable Gloves	18
CV Boot Kits & Accessories	3	VDE Tool Sets & Hand Tools	10-11	Superseal Connector Kits	19
Drilling	4	EV Service Bundles	12	DT Connector Kits	20
Cutting, Grinding & Accessories	5	Sealants, Paints & Fixings	12-13	DTM Connector Kits	21
S·A·S Maintenance & Lubricants	6	S·A·S Valeting Range	14-15	High Current Connectors	21
S·A·S Cleaning	7	Vehicle Deodorising & Cleaning	15-16	Auto Cable, Terminals & Accessories	22-23

**Product Update  
Issue 1**



# Wheel Nut and Locking Wheel Nut Removal

RG TOOLS

- x2 Battery packs
- 1/2" Shaft Output
- 20V Lithium ion
- 2000 Max RPM
- 5225 Brushless motor
- 1300 Max Torque

## RG TOOLS 1/2" Drive Cordless Impact Wrench

Complete with 2x Li-ion 20V/4000mAh batteries and mains charging adaptor. Supplied in a robust plastic storage case.

- 3-speed gearbox with variable speed trigger for superior and precise control
- 1/2" shaft output with up to 1300 torque
- On-board LED light for better visibility
- Part of the 'one battery fits all' range

Part No.	Qty	Description
RG10000	1	Cordless Impact Wrench

RG TOOLS

## RG TOOLS Locking Wheel Nut Removal Kit

This comprehensive kit provides a method of removing locking wheel nuts and bolts when the specialist key is not available. Supplied in a robust storage case.

- Suitable for McGard style locking wheel nuts and bolts
- Contains 3 double ended keys which can be formed to suit the profile of the locking wheel nut/bolt
- For use on BMW, VAG, Ford, PSA, OPEL/Vauxhall and Volvo

Part No.	Qty	Description
RG10600	1 Kit	Locking Wheel Nut Removal Kit

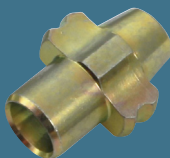
RG TOOLS

## RG TOOLS Replacement Removal Key

Keys feature a large and a small mouldable end. When correctly formed to the locking wheel nut/bolt head pattern a single key can remove all locking wheel nuts/bolts from the vehicle.

- Can be used in conjunction with RG10600 to remove 'McGard' style locking wheel nuts/bolts fitted as OE by over 30 vehicle manufacturers
- Manufactured from high quality alloy steels
- For single use, cannot be reformed for use on another vehicle

Part No.	Qty	Description
RG10602	Pack of 10	Replacement Keys
RG10604	1	Replacement Key



KS TOOLS GERMANY



## KS TOOLS 1/2" Drive Alloy Wheel Impact Socket Set

Chrome molybdenum steel, colour plated polished finish. Supplied in a robust plastic storage case.

- Plastic sleeve for protection when working with alloy rims.
- Colour coding allows a quick selection of socket sizes.
- The plastic sleeve can be removed if necessary.

Part No.	Qty	Description
K515.1005	1 Set	3 Piece Set
3 x Sizes: 17 mm (Blue), 19 mm (Yellow), 21 mm (Red).		

KS TOOLS GERMANY



## KS TOOLS 1/2" Drive Alloy Wheel Torque Impact Socket Set

Chrome molybdenum steel, phosphate finish. Supplied in a robust plastic storage case.

- Plastic sleeve for protection when working with alloy rims
- Colour coding allows a quick selection of socket sizes
- Particularly robust, slim line design, 85 mm long
- Also suitable for dome nuts with chrome finish

Part No.	Qty	Description
K515.1070	1 Set	3 Piece Set
3 x Sizes: 17 mm (Blue), 19 mm (Lime), 21 mm (Red).		

KS TOOLS GERMANY



## KS TOOLS 1/2" Drive Extra Long Special Twist Socket Set

Chrome molybdenum steel, phosphate finish. Tool length: 145 mm. For use with an impact wrench. Supplied in a robust plastic storage case.

- The aggressive groove design bites itself firmly around the screw or nut, so that between the twist socket and nut head a powerful connection is achieved. The more power on the drive, results in more effective biting of the twist socket profile on the screw or nut head.
- Includes impact bar for removal of extracted nut or bolt from the impact socket.

Part No.	Qty	Description
K913.1290	1 Set	4 Piece Set
3 x Special Twist sockets 1/2": Ø 17, 19, 21 mm. 1 x Impact bar.		

KS TOOLS GERMANY



## KS TOOLS Mechanics Anti-Vibration Gel Gloves

Absorbs and dissipates repeated impacts and shocks. Designed for handling power tools, industrial tools and any tools with repetitive vibration.

Part No.	Qty	Size	EN388 Rating
K310.0250	1 Pair	L	2121
K310.0255	1 Pair	XL	2121
K310.0260	1 Pair	XXL	2121

# Wheel Balancing and CV Boot Kits & Accessories



## Wheel Balancing Weight Pliers

For mounting, removing and relocating wheel balance weights on the rim.  
For expanding and compressing of clips, heavy duty jaw for cutting wheel weights.

Part No.	Qty	Length
<b>TL254</b>	1	<b>240 mm</b> (9 1/2")



## OE Quality Adhesive Wheel Weights - Steel

Electro plated. General use.

Part No.	Qty	Weight
<b>TW560</b>	Pack of 25	<b>60g Strips</b>
<b>TW600</b>	Box of 100	<b>60g Strips</b>

Strip Weights: 5g (x 4), 10g (x 4).



## Black Adhesive Wheel Weights - Steel

General use.

Part No.	Pack of	Weight	Strip Dims: W x H x L
<b>TW700</b>	50	<b>4 x 5g &amp; 4 x 10g</b>	19 x 4 x 138
<b>TW701</b>	100	<b>4 x 5g &amp; 4 x 10g</b>	19 x 4 x 138



## Black Adhesive Wheel Weights For Motorcycles - Steel

For motorcycle wheels.

Part No.	Pack of	Weight	Strip Dims: W x H x L
<b>TW702</b>	50	<b>4 x 5g &amp; 4 x 10g</b>	15 x 4.8 x 133



## HOFMANN 'Type 706' Black Adhesive Wheel Weights For Motorcycles - Lead

For motorcycle wheels.

Part No.	Pack of	Weight	Strip Dims: W x H x L
<b>TW703</b>	50	<b>8 x 5g</b>	10 x 4.8 x 105



## BAILCAST 'Maxiboot' Universal CV Boot Kit

Complete with 2 x stainless steel clamps, 60g sachet of MoS2 CV grease and instructions. Shaft Ø: 28-40 mm. Join Ø: 76-120 mm.

- For large CV joints and drive shafts.

Part No.	Qty	Description
<b>CVB88</b>	1 Kit	<b>CV Boot Kit</b>



## CV Boot Clamp Pliers

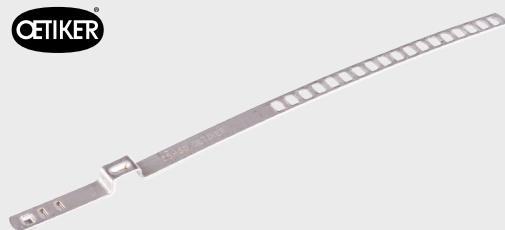
Part No.	Qty	Description
<b>TL928</b>	1	<b>CV Boot Clamp Pliers</b>



## BAILCAST 'Uniboot' Stretchy Drive Shaft Boot Kit

Complete with 2 x stainless steel clamps, 60g sachet of MoS2 CV grease and instructions. Shaft Ø: 19-28 mm. Join Ø: 56-110 mm.

Part No.	Qty	Description
<b>CVB96</b>	1 Kit	<b>Drive Shaft Boot Kit</b>
<b>CVB96B</b>	12 Kits	<b>Drive Shaft Boot Kits</b>



## OETIKER PG159 CV Boot Clamps

304 stainless steel.

- Simple and fast installation - visible deformation provides evidence of proper closure

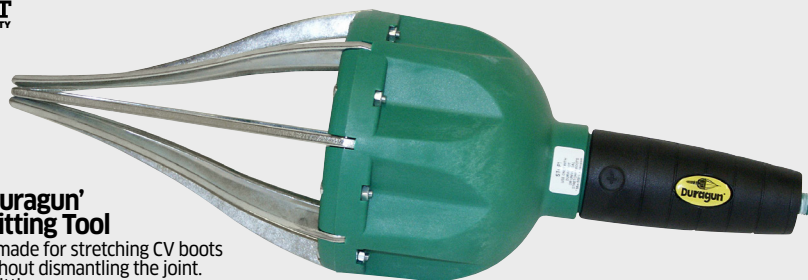
Part No.	Pack of	Size	Range
<b>HCV10</b>	10	<b>Small</b>	25 - 50 mm
<b>HCV20</b>	10	<b>Large</b>	40 - 110 mm



## BAILCAST 'Duragun' Pneumatic Fitting Tool

Time-saving tool made for stretching CV boots over CV joints without dismantling the joint. Standard air line fitting.

Part No.	Qty	Description
<b>TL994</b>	1	<b>Pneumatic Fitting Tool</b>





# Drilling

**RG TOOLS**

<b>x1</b> Battery pack	<b>1450</b> Max RPM	<b>20v</b> Lithium ion
<b>27</b> MAX mm Wood Drilling	<b>755</b> 4 Pole Motor	<b>90Nm</b> Max Newton-Metre

## RG TOOLS Cordless Drill

Complete with 1x Li-ion 20V/4000mAh battery and mains charging adaptor. Supplied in a robust plastic storage case.

- Precise speed adjustable trigger up to 1,450 RPM
- On-board LED light for better visibility
- Part of the 'one battery fits all' range

Part No.	Qty	Description
<b>RG10010</b>	1	<b>Cordless Drill</b>



**RG TOOLS**

<b>x1</b> Battery pack	<b>3200</b> rpm Impact frequency	<b>20v</b> Lithium ion
<b>4000</b> Max RPM	<b>4815</b> Brushless motor	<b>320Nm</b> Max Newton-Metre

## RG TOOLS Cordless Impact Driver

Complete with 1x Li-ion 20V/4000mAh battery and mains charging adaptor. Supplied in a robust plastic storage case.

- Brushless motor offers high efficiency, low noise & smooth operation
- 1/4" HEX dr quick chuck
- On-board LED light for better visibility
- Fast, medium and slow impact modes
- Part of the 'one battery fits all' range

Part No.	Qty	Description
<b>RG10020</b>	1	<b>Cordless Impact Driver</b>



**DORMER**

## DORMER 'A002' HSS Jobber Twist Drill Set - 1-10mm

Bright finish/TiN tipped. Split point (above 2.0 mm). 118° point angle. DIN 338. Supplied in a plastic storage case.

- Titanium Nitride tip coating not only minimises wear and increases tool life but also allows increased performance
- Self-centring split-point for excellent positional accuracy and hole quality
- Improved flute geometry for rapid chip evacuation
- Manufactured to BS328/DIN338 standards

Part No.	Qty	Description
<b>DDK170</b>	1 Set	<b>170 Piece Set</b>
19 x Sizes: 1.0 - 10.0 mm in 0.5 mm steps.		
1.0 mm x10	1.5 mm x10	2.0 mm x10
2.5 mm x10	3.0 mm x10	3.5 mm x10
4.0 mm x10	5.0 mm x10	6.0 mm x10
7.0 mm x10	8.0 mm x10	9.0 mm x5
10.0 mm x5		



## LASER 1/4" Dr. Hex Bits Set

Complete with magnetic bit holder. Supplied in a robust rubber organiser.

Part No.	Qty	Description
<b>TL474</b>	1 Set	<b>33 Piece Set</b>
1 x Bit holder, 1/4" magnetic: 60 mm. 32 x Bits 1/4", 25 mm: 5 x Slotted: 3, 4, 5, 6, 7 mm.		
9 x PHILLIPS: PH0, PH1, PH2 (x 2), PH3. 5 x POZIDRIV: PZ0, PZ1, PZ2 (x 2), PZ3.		
7 x Pozidriv: PZ1 (x 2), PZ2 (x 3), PZ3 (x 2). 6 x Hex: 2, 2.5, 3, 4, 5, 6 mm.		
6 x Star (TX): T10, T15, T20, T25, T30, T40.		

## TRIDENT 1/4" Dr. Hex Security Bit Set

Chromium-vanadium steel bits. Supplied in robust storage case. Dimensions: 195 x 135 x 37 mm.

Part No.	Qty	Description
<b>TL1100</b>	1 Set	<b>100 Piece Set</b>
1 x Bit Holder, 1/4" magnetic: 60 mm. 1 x Bit Adaptor Socket, 1/4". 1 x Cup Hook Y-Adaptor: 1/4" Hex.		
2 x Socket Adaptors, 1/4" Sq x 1/4" Hex Dr: 25 mm, 50 mm.		
95 x 1/4" Bits, 25 mm: 9 x Tamper Proof TX: TP8, TP10, TP15, TP20, TP25, TP27, TP30, TP35, TP40.		
9 x TX: T8, T10, T15, T20, T25, T27, T30, T35, T40. 3 x Clutch: 1, 2, 3.		
3 x Torq: 1, 2, 3. 3 x Spline: M5, M6, M8. 4 x Tri-Wing: 1, 2, 3, 4. 4 x Square: 0, 1, 2, 3, 4. 4 x Spanner: 4, 6, 8, 10.		
9 x Flat: 3, 4, 4.5, 5, 5.5, 6, 6.5, 7, 8 mm. 8 x PH: PH0, PH1, PH2 (x 5), PH3. 8 x PZ: PZ0, PZ1, PZ2 (x 5), PZ3.		
10 x Hex, Imperial: 1/16", 5/64", 3/32", 7/64", 1/8", 9/64", 5/32", 3/16", 7/32", 1/4".		
6 x Tamper Proof Hex, Imperial: 5/64", 3/32", 7/64", 1/8", 9/64", 5/32".		
9 x Hex, Metric: 1.5, 2, 2.5, 3, 4, 5, 5.5, 6, 8 mm. 6 x Tamper Proof Hex, Metric: 2, 2.5, 3, 4, 5, 6 mm.		



**KS TOOLS**  
GERMANY

## KS TOOLS 1/4" Dr. Security Bit Set

High quality S2 steel, nickel plated. Supplied in a robust plastic storage case.

Part No.	Qty	Description
<b>K911.2027</b>	1 Set	<b>99 Piece Set</b>
1 x Bit holder, 1/4" magnetic: 60 mm. 1 x Socket adaptor: 1/4" square x 1/4" hex drive.		
1 x Bit adaptor socket 1/4". 79 x Bits 1/4", 25 mm: 9 x Slotted: 3, 4, 4.5, 5, 5.5, 6, 6.5, 7, 8 mm.		
5 x PHILLIPS: PH0, PH1, PH2 (x 2), PH3. 5 x POZIDRIV: PZ0, PZ1, PZ2 (x 2), PZ3.		
9 x Hexagonal: 1.5, 2, 2.5, 3, 4, 5, 5.5, 6, 8 mm. 12 x Hexagonal: 2, 2.5, 3, 4, 5, 6 mm, 5/64", 3/32", 7/64", 1/8", 9/64", 5/32".		
9 x TORX: T8, T10, T15, T20, T25, T27, T30, T40, T45.		
9 x Tamper Proof TORX: TP8, TP10, TP15, TP20, TP25, TP27, TP30, TP35, TP40.		
3 x Spline (XZN): M5, M6, M8. 3 x Dual Wedge: 1, 2, 3, 4. 4 x Tri-Wing: 1, 2, 3, 4.		
4 x Spanner: 4, 6, 8, 10. 3 x Torque: 6, 8, 10 mm. 4 x Square: 0, 1, 2, 3. 17 x Bit 1/4", 75 mm: 3 x Hexagonal: 4, 5, 6 mm.		
3 x Tamper Proof TORX: TP15, TP20, TP30. 4 x Tri-Wing: 1, 2, 3, 4. 4 x Spanner: 4, 6, 8, 10. 3 x Torque: 6, 8, 10 mm.		





# Cutting, Grinding & Accessories

RG TOOLS



## RG TOOLS Battery

Replacement battery for the RG Tools Cordless Power Tools Range.

Part No.	Qty	Description
<b>RG10004</b>	1	<b>Battery 4.0A</b>
<b>RG10006</b>	1	<b>Battery 6.0A</b>

RG TOOLS



<b>x1</b> Battery pack	<b>10000</b> RPM Idle speed	<b>20v</b> Lithium ion
<b>115mm</b> Max disc diameter	<b>700W</b> Input power	<b>M10/M14</b> Spindle thread

## RG TOOLS Cordless Angle Grinder

Complete with 1x Li-Ion 20V/4000mAh battery and mains charging adaptor. Supplied in a robust plastic storage case.

- **10,000 RPM** idle speed
- **700W** of power, outperforming corded models
- Part of the 'one battery fits all' range

Part No.	Qty	Description
<b>RG10015</b>	1	<b>Cordless Angle Grinder</b>

RG TOOLS



## Face Shield

Complete with brow guard/harness and 20 cm (8") polycarbonate visor.  
BS EN 166/1/B9.

Part No.	Qty	Description
<b>WS18</b>	1	<b>Face Shield with Clear Visor</b>
<b>WS18C</b>	1	<b>Replacement Clear Visor</b>



## RG TOOLS 1.0 mm Thin Flat Metal Cutting Discs

Compliant with EN 12413. Suitable for use with stainless steel, mild steel and high grade steel. Supplied in a metal storage tin.

- Free from iron, sulphur and chlorine
- Straight and fast precision cutting

Part No.	Qty	O.D.	O.D. x Thickness x Hole
<b>RG20150</b>	Tin of 10 Discs	<b>4 1/2"</b>	115 x 1.0 x 22.23 mm



## Grinding Goggles

BS EN 166/1/B

Part No.	Qty	Description
<b>WS23</b>	1	<b>Grinding Goggles</b>





# S·A·S Maintenance & Lubricants

## MAINTAINING AUTOMOTIVE & ENGINEERING PROFESSIONALS FOR OVER 35 YEARS

S·A·S has been the Universal Maintenance Lubricant of choice for automotive and engineering professionals for over 35 years. The formula that you've come to trust continues to deliver outstanding performance across countless applications in all industrial environments.



### S·A·S Universal Maintenance Lubricant

Advanced formula with rust inhibitors and moisture displacers.

- Penetrates & lubricates.
- Cleans & degreases.
- Protects all metals.
- Contains PTFE.
- Frees seized parts fast!
- Inhibits rust & corrosion.
- Displaces moisture.
- Silicone FREE formula.

Part No.	Pack of	Size
SAS20	12	500ml Aerosols with 360° Valve
SAS22A	1	5 Litre Container
SAS6	12	200ml Aerosols

### S·A·S Universal Maintenance Lubricant Spray Applicators

For use with Bulk liquid S·A·S Universal Maintenance Lubricant (Part No. SAS22).

Part No.	Qty	Size
SAS23	4	500ml Trigger Sprayers



## SAS

### S·A·S Clear Grease

For use on areas requiring a tenacious lubricant, whilst retaining a good cosmetic appearance, e.g. Car door locks.

- Silicone FREE
- Does NOT contain PTFE

Part No.	Pack of	Size
SAS18	6	500ml Aerosols



## SAS

### S·A·S Chain and Cable Lube

For heavyweight drive chains, e.g. Fork-lift truck masts, motor cycle chains.

- Silicone FREE
- Penetrating, anti-fling formula.
- Rubber grommet friendly.

Part No.	Pack of	Size
SAS14	6	500ml Aerosols



## SAS

### S·A·S Silicone Spray

For use on curtain slider tracks, folding bus and train doors, coin operated machines, etc. Use as a mould release and for easing slip-fitting parts assembly. Use on surfaces where heat is present, e.g. heat sealing machines. Imparts waterproofing qualities to fabrics, e.g. tarpaulins, industrial outdoor clothing.

- Stable to 275°C
- Lowers friction & prevents sticking
- Low stain formula
- Contains Silicone
- Zero effect on plastics
- NOT food safe

Part No.	Pack of	Size
SAS8	6	500ml Aerosols



## SAS

### S·A·S White Grease

Universal grease with almost limitless applications, e.g. Locks, hinges and striker plates. Suitable for clean area applications.

- Anti water wash-out properties
- Provides visual check where used
- Anti-corrosive
- Silicone FREE formula.

Part No.	Pack of	Size
SAS7	6	500ml Aerosols



## SAS

### S·A·S Silicone Grease

Lubricating grease which provides corrosion resistance to metallic surfaces.

- Moisture repelling
- Excellent insulating properties for electronic control and switchgear in exterior applications
- Contains Silicone

Part No.	Pack of	Size
SAS19	6	500ml Aerosols



## SAS

### S·A·S Copper Grease

Stable up to 275°C as a grease & up to 1200°C as a release agent.

- For high temperature applications: Brake and hand brake linkages, exhaust manifold nuts, studs & parts, wheel nuts
- Can be used on boilers and water heaters, e.g. Inspection flanges and to lubricate moving parts in heat treatment industry
- Silicone FREE formula

Part No.	Pack of	Size
SAS17	6	500ml Aerosols



## SAS

### S·A·S Battery Terminal Protector

Suitable for use on batteries and earthing straps in cars, buses, trains and plant hire equipment.

- Protects against corrosion
- Improves electrical continuity thus improving starting
- Contains an indicator to visualise acid leaks (turns red)
- Waterproofs terminals
- Silicone FREE formula

Part No.	Pack of	Size
SAS3	6	500ml Aerosols



## SAS

### S·A·S Food Safe Lube

For food preparation and food packing machinery. For use on chain sprockets, slides or any moving part. Water resistant, suitable for wet pack operations.

- Based on edible Soya bean oil.
- Nut and nut oil FREE.
- Taint FREE formula.
- Temperature range: -10 to 100°C.
- Silicone FREE formula.

Part No.	Pack of	Size
SAS12	6	500ml Aerosols





# S·A·S Cleaning

**SAS**



## S·A·S Brake Cleaner

Cleans brake and clutch parts without dismantling.

- Removes brake fluid, oil, dust, etc.
- Helps maximise brake efficiency.
- Prevents objectionable dust escaping into working environment.
- Acetone FREE Formula - Safe to use in most Solvent Sprayers.

Part No.	Pack of	Description
<b>SAS52</b>	4	5 Litre Containers *
<b>SAS62</b>	1	25 Litre Drum - Side Tap Facility *
<b>SAS2</b>	6	500ml Aerosols

\* Limited availability due to transport regulations



## Solvent Pressure Sprayers

Polyamid pump with FKM seals. Polyethylene container.

Part No.	Qty	Capacity
<b>CAN12</b>	1	1 Litre
<b>CAN15</b>	1	1.5 Litre
<b>CAN12K</b>	1 Kit	Replacement FKM Seal Kit

**SAS**

## S·A·S Heavy Duty Surface Degreaser

Suitable for use in power wash and hand pump wash dispensers. Can also be used for hand application.

- Suitable for use on engines and chassis.
- Water-based and non-flammable - Suitable for petrol station forecourts.
- Economical formula - can be diluted
- Silicone FREE formula.

Part No.	Qty	Size
<b>SAS1059</b>	1	5 Litre Container



**SAS**

## S·A·S Label Remover

A versatile solvent cleaner with a fast acting universal formula.

- Removes Sticker Glue, Masking Tape, Clear Adhesive Tape and Tar.
- Silicone FREE formula.

Part No.	Pack of	Size
<b>SAS58</b>	6	500ml Aerosols



**SAS**

## S·A·S Electrical / Contact Cleaner

Removes oil, tar, grease and helps remove carbon residues.

- Improves conductivity and helps prevent arcing and electrical breakdown.
- For all heavy duty electrical components, e.g. Switch gear, motors, relays.
- Silicone FREE formula.

Part No.	Pack of	Size
<b>SAS10</b>	6	500ml Aerosols



**SAS**

## S·A·S Throttle Body Cleaner

For all types of carburettors and fuel injection systems. No effect on catalytic converters or lambda sensors.

- Removes tars and gum build up.
- Improves performance and economy.
- Silicone FREE formula.

Part No.	Pack of	Size
<b>SAS4</b>	6	500ml Aerosols



**SAS**

## S·A·S Leak Detector

For detecting leaks in pneumatic systems and compression lock fittings.

- Suitable for use with air con systems.
- Safe for use during engine operation.
- Meets the requirements of BS EN14291:2004 - LPG Safe.
- Non-flammable water based fluid.
- Suitable for Nitrogen gas NOT suitable for Oxysetaline.
- Suitable for MOT.
- Silicone FREE formula.

Part No.	Pack of	Size
<b>SAS53</b>	6	400ml Aerosols



**SAS**

## S·A·S Paint & Gasket Remover

Removes work gaskets from rocker box covers, water pumps, manifolds etc.

- Removes paints, varnishes and lacquers, prior to refinishing.
- Removes rubber residues from wheel hubs prior to fitting new or repaired tyres.
- Removes charred oil residues from engine components.
- Silicone FREE formula.

Part No.	Pack of	Size
<b>SAS5</b>	6	500ml Aerosols





# S·A·S Paints & Primers

A professional quality range of Paints & Primers to cater for industrial and automotive applications with outstanding coverage and durability, the first choice for many professionals.

**SAS**

## S-A-S Black Paint - Gloss

Tough acrylic formula paint for interior and exterior use.

- Suitable for use on wood, metal, glass, ceramic, paper, card and most plastics
- Professional fan spray - Adjustable nozzle for different spray patterns
- Excellent adhesion - Avoids sagging



Part No.	Pack of	Size
SAS27	6	500ml Aerosols

**SAS**

## S-A-S Black Paint - Satin

Tough acrylic formula paint for interior and exterior use.

- Suitable for use on wood, metal, glass, ceramic, paper, card and most plastics
- Professional fan spray - Adjustable nozzle for different spray patterns
- Excellent adhesion - Avoids sagging



Part No.	Pack of	Size
SAS25	6	500ml Aerosols

**SAS**

## S-A-S Zinc Spray

Use as a primer coat which can be over painted with acrylic, cellulose, alkyd, polyurethane alkyd and epoxy. Use as a coating on pipes and steel fabrications.

- 66% zinc content (in dry film).
- Thin film (e.g. Single coat) can be welded through.



Part No.	Pack of	Size
SAS24	6	500ml Aerosols

**SAS**

## S-A-S Primer - White

Tough acrylic formula suitable for metal, wood and plastic.

- Provides a durable base, which can be oversprayed in 24 hours
- Can be overpainted with cellulose, acrylic, alkyd, polyurethane alkyd and epoxy
- Great results with fewer coats



Part No.	Pack of	Size
SAS36	6	500ml Aerosols

**SAS**

## S-A-S Black Paint - Matt

Tough acrylic formula paint for interior and exterior use.

- Suitable for use on wood, metal, glass, ceramic, paper, card and most plastics
- Professional fan spray - Adjustable nozzle for different spray patterns
- Excellent adhesion - Avoids sagging



Part No.	Pack of	Size
SAS28	6	500ml Aerosols

**SAS**

## S-A-S Black Paint - VHT (Very High Temperature)

Use on exhausts, manifolds and any surfaces which are subject to high temperatures.

- Fast drying aerosol paint with high covering power.
- Gives a tough durable coating and a matt finish.
- Petrol & oil resistant when cured.
- Withstands temps up to 650°C.



Part No.	Pack of	Size
SAS29	6	500ml Aerosols

**SAS**

## S-A-S Primer - Red Oxide

Tough acrylic formula suitable for metal, wood and plastic.

- Provides a durable base, which can be oversprayed in 24 hours
- Can be overpainted with cellulose, acrylic, alkyd, polyurethane alkyd and epoxy
- Great results with fewer coats



Part No.	Pack of	Size
SAS37	6	500ml Aerosols

**SAS**

## S-A-S Primer - Grey

Tough acrylic formula suitable for metal, wood and plastic.

- Provides a durable base, which can be oversprayed in 24 hours
- Can be overpainted with cellulose, acrylic, alkyd, polyurethane alkyd and epoxy
- Great results with fewer coats



Part No.	Pack of	Size
SAS35	6	500ml Aerosols

# S·A·S Vehicle Valeting

A comprehensive range of professional quality Vehicle Valeting products to clean and maintain appearances inside and out.

**SAS**

## S-A-S Glass Cleaner

Highly effective cleaning power removes dust, finger marks, stains and odours.

- Cleans Glass, Ceramics, Perspex and any hard surfaces.
- Can be used as a Telephone Cleaner (spray onto cloth before use).
- Silicone FREE formula.



Part No.	Pack of	Size
SAS16	6	500ml Aerosols

**SAS**

## S-A-S Multi-Purpose Foam Cleaner

Use on Upholstery, Curtains, Fabrics and Hard Surfaces; e.g. Computer Casings, Office Furniture.

- Instant foaming action lifts dirt.
- Easily wiped away.
- Removes nicotine stains.
- Anti-static formula when used with non static cloth (i.e. microfibre).
- Silicone FREE formula.



Part No.	Pack of	Size
SAS32	6	500ml Aerosols

**SAS**

## S-A-S Multi Shine

Designed for use in body shops or adjacent to paint spray areas.

- A Silicone FREE alternative to 'Cockpit Shine'.
- Gives an attractive, satin sheen to surfaces.
- Ideal for Matt finish dashboard/interiors.



Part No.	Pack of	Size
SAS31	6	500ml Aerosols

**SAS**

## S-A-S Cockpit Spray

Restores sheen to any hard surface

- Enhances appearance of plastics, vinyl and rubber.
- Suitable for Public Service Vehicles as a protective coating against soiling.
- Acts as a plasticiser.
- Contains Silicone.



Part No.	Pack of	Size
SAS15	6	500ml Aerosols



# S-A-S Threadlockers & Adhesives

SAS

## S-A-S Thread Lock

Prevents vibration loosening and leakage through threaded fastening. Designed for easy disassembly of treated components. Anaerobic formula allows curing only when confined between metal parts.

- **Strength:** Low
- **Gap Fill:** 0.50 mm
- **Suitable for use with oil, petrol and diesel**



Part No.	Qty	Size
SAS2220	1	50ml Bottle

SAS

## S-A-S High Strength Retainer

Provides high strength retention under cyclic loading. Will retain full strength and not suffer fatigue under load stress, as well as benefiting from low corrosivity.

- **Strength:** High
- **Gap Fill:** 0.20 mm
- **Temp Range:** Up to 150°C
- **Full cure time:** 24 hours



Part No.	Qty	Size
SAS638	1	50ml Bottle

SAS

## S-A-S Quick Metal Putty

Kneadable epoxy repair putty. Ideal for long lasting emergency repairs. Adheres to moist surfaces even curing under water. Steel filled product resistant to corrosion.

- **Temperature Range:** Up to +120°C
- **Cure Time:** 1 hour (Full Cure: 24 hours)
- **Cured material can be filed, bored, tapped and over painted**



Part No.	Qty	Size
SAS390	1	112g Stick

SAS

## S-A-S Nut Lock

Prevents shock and vibration loosening and leakage on all types of metal fasteners. Designed for locking and sealing, Nut Lock withstands harsh environments yet is removable with hand tools.

- **Strength:** Medium
- **Gap Fill:** 0.25 mm
- **Temp Range:** -40°C to +150°C
- **Suitable for use with oil, petrol and diesel**



Part No.	Qty	Size
SAS2430	1	50ml Bottle

SAS

## S-A-S Quick Metal Liquid

Good matching qualities for bonding and repairing of most metals. Ideal for repair of metal housings and steel sheets.

- **Temperature Range:** Up to 120°C (250°F)
- **Cure Time:** 45 minutes (Full Cure: 16 hours)
- **Cured material can be filed, bored, tapped and over painted**



Part No.	Qty	Size
SAS380	1	25ml Syringe

SAS

## S-A-S Quick Aluminium Putty

Epoxy putty for rebuilding damaged castings and worn parts.

- **Temperature Range:** Up to +120°C
- **Cure Time:** 1 hour (Full Cure: 24 hours)
- **Cured material can be filed, bored, tapped and painted over**



Part No.	Qty	Size
SAS391	1	114g Stick

SAS

## S-A-S Stud Lock

Fast acting seal against leakage and corrosion. Chemical resistance against fuels, lubricants and gases. Eliminates double nutting and/or welding of critical assemblies.

- **Strength:** High
- **Gap Fill:** 0.10 mm
- **Temp Range:** -50°C to +150°C
- **Suitable for use with oil and petrol**



Part No.	Qty	Size
SAS2710	1	50ml Bottle

SAS

## S-A-S Rapid Epoxy

Quick setting, waterproof and impact resistant fluid epoxy resin adhesive.

- **Temperature range:** Up to 50°C
- **Cure time:** 5 minutes (Full cure: 24 Hours)



Part No.	Qty	Size
SAS450	1	25ml Syringe

SAS

## S-A-S Super Glue

Medium viscosity. Bonds metal, rubber and most materials in seconds.

Part No.	Qty	Size
SAS4950	1	20g Bottle



SAS

## S-A-S Bearing Fit

Provides medium strength retention under cyclic loading. Will retain full strength and not suffer fatigue under load stress, as well as benefiting from low corrosivity.

- **Strength:** Medium
- **Gap Fill:** 0.20 mm
- **Temp Range:** Up to 150°C
- **Full cure time:** 12 hours



Part No.	Qty	Size
SAS601	1	50ml Bottle

SAS

## S-A-S High Strength Epoxy

High strength, waterproof and impact resistant fluid epoxy resin adhesive.

- **Temperature range:** Up to 42°C
- **Cure time:** 20 minutes (Full cure: 24 Hours)



Part No.	Qty	Size
SAS460	1	25ml Syringe

SAS

## S-A-S Super Glue - High Viscosity

High viscosity. Bonds metal, rubber and most materials in seconds.

Part No.	Qty	Size
SAS422	1	20g Bottle



SAS

## S-A-S Activator

Dramatically increases the cure speed of instant adhesives/super glue. Can also help the cure rate when used in large gaps and aids bonding on porous materials.

- **Suitable for use on PVCu, plastic, glass and metal.**

Part No.	Qty	Size
SAS325	1	200ml Aerosol



# VDE Tool Sets & Hand Tools from RG Tools

Manufactured to IEC 60900 for live working up to 1000V AC / 1500V DC

**RG TOOLS**



## RG TOOLS VDE 1/2" Dr Tool Set 7pc

Part No.	Qty	Description
<b>RG10120</b>	1 Set	<b>7 Piece Tool Set</b>

Contents: 1 x 1/2" Drive Reversible Ratchet. 1 x 1/2" Drive Extension: 125mm L. 5 x 1/2" Drive Sockets: 14, 17, 19, 22, 24mm.

**RG TOOLS**



## RG TOOLS VDE 1/2" Dr Socket Set

Part No.	Qty	Description
<b>RG10500</b>	1 Set	<b>11 Piece Tool Set</b>

1 x Reversible Ratchet, 1 x T-handle, 1 x 125 mm Extension Bar. Deep Sockets: 1 x 10 mm, 1 x 12 mm, 1 x 13 mm, 1 x 14 mm, 1 x 17 mm, 1 x 19 mm, 1 x 22 mm, 1 x 24 mm.

**RG TOOLS**



## RG TOOLS VDE 3/8" Dr T-Handle+S/Drivers 8pc

Part No.	Qty	Description
<b>RG10110</b>	1 Set	<b>8 Piece Tool Set</b>

Contents: 1 x 3/8" Drive T-Handle. 5 x 3/8" Drive Sockets: 7, 8, 10, 12, 14mm. 2 x Screwdrivers: PH2 x 100mm, SL1.0 x 5.5 x 125mm.

**RG TOOLS**



## RG TOOLS VDE 3/8" Dr Socket Set

Part No.	Qty	Description
<b>RG10502</b>	1 Set	<b>9 Piece Tool Set</b>

1 x Reversible Ratchet, 1 x 100 mm Extension Bar. Deep Sockets: 1 x 8 mm, 1 x 10 mm, 1 x 12 mm, 1 x 13 mm, 1 x 14 mm, 1 x 17 mm, 1 x 19 mm.

**RG TOOLS**

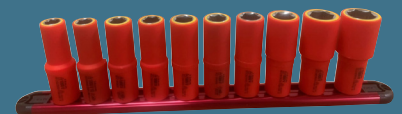


## RG TOOLS VDE 3/8" Dr Tool Set 26pc

Part No.	Qty	Description
<b>RG10140</b>	1 Set	<b>26 Piece Tool Set</b>

Contents: 1 x Combi Pliers, 1 x Side Cutters. Open End Wrenches: 7, 8, 10, 12, 14 mm. Screwdrivers: PH1 x 100 mm, PH2 x 100 mm, SL1.0 x 125 mm, SL0.8 x 100 mm. 2 Cable Knives, 3/8" Drive Ratchet, 3/8" Drive Extension 100 mm. 3/8" Drive Sockets: 7, 8, 10, 12, 14 mm. 3/8" Drive Sockets: 1/4", 5/16", 3/8", 1/2", 9/16", 3/8" Drive T-Handle.

**RG TOOLS**

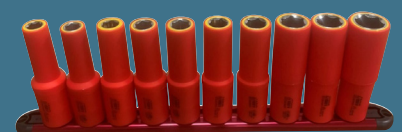


## RG TOOLS VDE 3/8" Dr Socket Rail Set

Part No.	Qty	Description
<b>RG10504</b>	1 Set	<b>10 Piece Set</b>

2 x 10 mm, 1 x 11 mm, 1 x 12 mm, 2 x 13 mm, 1 x 14 mm, 1 x 15 mm, 1 x 17 mm, 1 x 19 mm.

**RG TOOLS**



## RG TOOLS VDE 1/2" Dr Socket Rail Set

Part No.	Qty	Description
<b>RG10506</b>	1 Set	<b>10 Piece Set</b>

2 x 10 mm, 1 x 11 mm, 1 x 12 mm, 2 x 13 mm, 1 x 14 mm, 1 x 16 mm, 1 x 17 mm, 1 x 19 mm.





**RGTOOLS**



**RG TOOLS  
VDE Open End Wrench**

Part No.	Qty	Open Jaw	Overall Length
<b>RG10200</b>	1	<b>10 mm</b>	108 mm
<b>RG10205</b>	1	<b>13 mm</b>	144 mm
<b>RG10210</b>	1	<b>15 mm</b>	163 mm
<b>RG10215</b>	1	<b>17 mm</b>	163 mm
<b>RG10220</b>	1	<b>19 mm</b>	180 mm
<b>RG10225</b>	1	<b>24 mm</b>	224 mm

**RGTOOLS**



**RG TOOLS  
VDE Open End Wrench Set 5pc**

Part No.	Qty	Description
<b>RG10130</b>	1 Set	<b>5 Piece Tool Set</b>
Contents: 5 x Open End Wrenches: 7, 8, 10, 12, 14mm.		

**RGTOOLS**



**RG TOOLS  
Voltage Tester 120-250V**

Part No.	Qty	Description
<b>RG10470</b>	1	<b>Voltage Tester</b>

**RGTOOLS**



**RG TOOLS  
VDE Bent Nose Pliers 8"**

Part No.	Qty	Description
<b>RG10365</b>	1	<b>VDE Bent Nose Pliers</b>

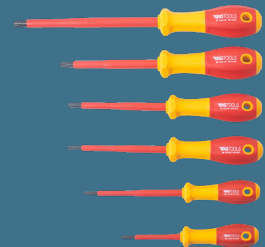
**RGTOOLS**



**RG TOOLS  
VDE Screwdriver Phillips**

Part No.	Qty	Tip	Shaft Length
<b>RG10460</b>	1	<b>No. 0</b>	60 mm
<b>RG10462</b>	1	<b>No. 1</b>	80 mm
<b>RG10464</b>	1	<b>No. 2</b>	100 mm

**RGTOOLS**



**RG TOOLS  
VDE Star Set 6pc**

Part No.	Qty	Description
<b>RG10412</b>	1 Set	<b>6 Piece Tool Set</b>
6 x Star screwdrivers: T10 x 60mm, T15 x 100mm, T20 x 100mm, T25 x 100mm, T30 x 100mm, T40 x 150mm.		

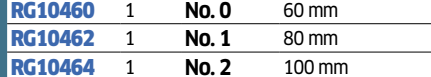
**RGTOOLS**



**RG TOOLS  
VDE Combi Pliers 6"**

Part No.	Qty	Description
<b>RG10350</b>	1	<b>VDE Combi Pliers</b>

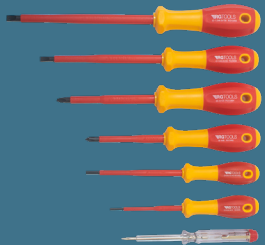
**RGTOOLS**



**RG TOOLS  
VDE Screwdriver Slot**

Part No.	Qty	Tip	Shaft Length
<b>RG10450</b>	1	<b>2.5</b>	75 mm
<b>RG10452</b>	1	<b>3.5</b>	100 mm
<b>RG10454</b>	1	<b>4</b>	100 mm
<b>RG10456</b>	1	<b>5.5</b>	125 mm
<b>RG10458</b>	1	<b>6.5</b>	150 mm

**RGTOOLS**



**RG TOOLS  
VDE Screwdriver Set 7pc**

Part No.	Qty	Description
<b>RG10410</b>	1 Set	<b>7 Piece Tool Set</b>
7 x screwdrivers: Slotted 2.5 x 75mm, 3.5 x 100mm, 5.5 x 125mm, 6.5 x 150mm. Phillips - 1 x 80mm, 2 x 100mm & voltage tester 120 - 150V.		

**RGTOOLS**



**RG TOOLS  
VDE Diag Side Cutters 6"**

Part No.	Qty	Description
<b>RG10360</b>	1	<b>VDE Side Cutters</b>

**RGTOOLS**



**RG TOOLS  
VDE Screwdriver TX**

Part No.	Qty	Tip	Shaft Length
<b>RG10480</b>	1	<b>T10</b>	60 mm
<b>RG10482</b>	1	<b>T15</b>	100 mm
<b>RG10484</b>	1	<b>T20</b>	100 mm
<b>RG10486</b>	1	<b>T25</b>	100 mm
<b>RG10488</b>	1	<b>T30</b>	100 mm
<b>RG10490</b>	1	<b>T40</b>	150 mm

**RGTOOLS**



**RG TOOLS  
VDE Screwdriver Set 8pc**

Part No.	Qty	Description
<b>RG10411</b>	1 Set	<b>8 Piece Tool Set</b>
8 x Slotted screwdrivers: 2.5 x 75mm, 4 x 100mm, 5.5 x 125mm, 6.5 x 150mm, Phillips - 0 x 60mm, 1 x 80mm, 2 x 100mm & voltage tester 120-150V.		

**RGTOOLS**



**RG TOOLS  
VDE Long Nose Pliers 8"**

Part No.	Qty	Description
<b>RG10355</b>	1	<b>VDE Long Pliers</b>

**RGTOOLS**



**RGTOOLS**

**RG TOOLS  
VDE Wire Strippers 6"**

Part No.	Qty	Description
<b>RG10370</b>	1	<b>VDE Wire Strippers</b>

**RG TOOLS  
VDE Wire Strippers 6"**

Part No.	Qty	Description
<b>RG10370</b>	1	<b>VDE Wire Strippers</b>



# EV Service Bundles



## EV Lockout Kit Bundle

Lockout kit for EV vehicles.

Part No. Qty Description

**EVKITS** 1 Kit 5 Piece Kit

Contents: EVH25 EV Lockout Station x1; EVH23 EV Lockout Safety Padlock x1; EVH24 EV Lockout Long Shackle Padlock x1; EVH4 EV Isolation Port (MSD) Lockout Device x1; EVH26 EV High Voltage Identification Tags x1.



## EV Service Kit Bundle

Comprehensive service kit for EV vehicles.

Part No. Qty Description

**EVKIT1** 1 Kit 19 Piece Kit

Contents: EVH1 EV Red/White Safety Chain 6mm x 25m x1; EVH2 EV Chain Support Post x4; EVH3 EV Chain Support Heavy Base x4; EVH10 EV Arc Flash Face Shield L/Weight x1; EVH11 EV Face Shield Protective Bag x1; EVH16 EV Rescue Safety Pole x1; EVH17 EV Insulated Rubber Mat 1m x1; EVH30 EV Steering Wheel Lockout & Sign x1; EVH32 EV Voltage Detector Up To 1000V x1; EVH34 EV Disconnect Shut Down Timer x1; EVH36 EV High Voltage Signs For Chain x1; EVH43 EV Insulated Gloves L x1; EVH46 EV Leather Gauntlet Overglove L x1.



## EV Posts & Chains Kit Bundle

Highly visible post and chain system to cordon off the working area around the car.

Part No. Qty Description

**EVKIT3** 1 Kit 9 Piece Kit

Contents: EVH1 EV Red/White Safety Chain 6mm x 25m x1; EVH2 EV Chain Support Post x4; EVH3 EV Chain Support Heavy Base x4.



## EV Posts & Chains Kit/EV Sign Bundle

Highly visible post and chain system to cordon off the working area around the car plus pack of 3 warning signs.

Part No. Qty Description

**EVKIT4** 1 Kit 10 Piece Kit

Contents: EVH1 EV Red/White Safety Chain 6mm x 25m x1; EVH2 EV Chain Support Post x4; EVH3 EV Chain Support Heavy Base x4; EVH36 EV High Voltage Signs For Chain x1.

upol



## U-POL Tiger Seal™ Polyurethane Sealant & Adhesive

One component, ready to use polyurethane sealant and adhesive which bonds to most materials including steel, aluminium, glass and most plastics.

• 1K formula - ready for use

• Ideal for sealing and bonding body panels, trims and seams

• Use to seal around windows, doors, lights and more

• Moisture-cured formula can be painted immediately

• Temperature range: -40°C to +90°C (up to +120°C for short intervals)

Part No.	Qty	Colour	Size
<b>VC23B</b>	1	Black	310ml Cartridge
<b>VC23B/12</b>	12	Black	310ml Cartridges
<b>VC23G</b>	1	Grey	310ml Cartridge
<b>VC23G/12</b>	12	Grey	310ml Cartridges
<b>VC23W</b>	1	White	310ml Cartridge
<b>VC23W/12</b>	12	White	310ml Cartridges

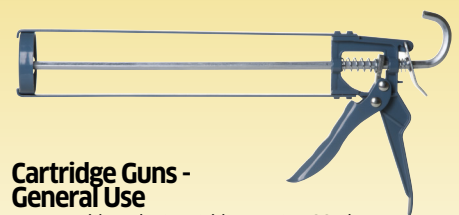


## Cartridge Gun - Heavy Duty

For use with sealant cartridges up to 400ml.

Part No. Qty Description

**TL885** 1 Heavy Duty Gun



## Cartridge Guns - General Use

For use with sealant cartridges up to 400ml.

Part No. Pack of Description

**TL921** 2 General Use Gun

# Sealants, Paints & Fixings



## VIP 'Power Mix' - 1 Minute 2K Polyurethane Universal Repair Adhesive

2-part syringe cartridge. Unique adhesive for plastic and metal components. Cures in 1 minute (full cure time 24 hours).



Part No.	Pack of	Colour	Weight
VIP21B	2 Kits	Black	56g



## VIP 'PowerWeld' 2K Methacrylate

2-component structural adhesive (Methyl-Methacrylate-Ester) for bonding metal, modern difficult to bond plastics and innovative composites. Complete with 2 x mixer nozzles.



- High lapshear resistance
- Very good chemical resistance
- High temperature specification
- Non runny
- Partly no primer / no sanding
- Remains elastic
- Wide adhesion spectrum
- Very good working consistency
- Fills cuts and gaps up to 4mm
- Good reworkability (sanding, drilling, painting, etc.)
- UV stable

Part No.	Qty	Size
VIP52	1 Kit	25ml Cartridge



## Applicator Nozzles

Suitable for 50ml 2-part syringe cartridges (suits Part No.s VIP25C & VIP21B).

Part No.	Pack of	Description
VIP37	12	Applicator Nozzles



## Heavy Duty Applicator Gun

Suitable for 50ml 2-part syringe cartridges.

Part No.	Qty	Description
TL887	1	50ml Syringe Applicator Gun



## HYCOTE Paint

Tough acrylic formula for use on all types of metallic and rigid plastics surfaces.

- Excellent covering power and durability
- Resistant to sunlight and colour fade
- Excellent adhesion to primed surfacesw

Part No.	Pack of	Size	Colour
VC460	6	400 ml Aerosols	Matt Black
VC461	6	400 ml Aerosols	Satin Black
VC462	6	400 ml Aerosols	Gloss Black
VC463	6	400 ml Aerosols	Gloss White
VC464	6	400 ml Aerosols	Aluminium



## HYCOTE Fluorescent Paint

High quality fluorescent safety paint designed for use over white surfaces.

- Greatly improves visibility in poorly illuminated locations

Part No.	Pack of	Size	Colour
VC465	6	400 ml Aerosols	Fluorescent Yellow
VC466	6	400 ml Aerosols	Fluorescent Green



## HYCOTE Primer

Acrylic.

- Excellent covering and adhesion to metals and rigid plastics
- Provides a tough, durable protective coating

Part No.	Pack of	Size	Colour
VC450	6	400 ml Aerosols	Grey
VC451	6	400 ml Aerosols	White
VC452	6	400 ml Aerosols	Red



## Bodyshop Trim Clips Bin Kit

Contains 36 packs of our most popular fixings.

Part No.	Qty	Description
MKIT2	1 Kit	Trim Clip Workshop Kit

1 x Louvred Panel (W x H): 457 x 946 mm (SB35).  
36 x Storage Bins (D x W x H): 165 x 100 x 75 mm Blue (SB21BU).  
36 x Trim Clips including Body Screws, Bonnet Clips, Door Trim Panel Retainers, Door Weather Clips, Drive Rivets, Lock Nuts, Moulding Clips, Panel Clips, Pipe & Cable Clips, Rivets, Push Rivets, Screw-Rivets, U-Nuts and Windshield Retainers.

## ESSENTIALS



## Trim Clip ESSENTIALS Counter Display Starter Kit

Dimensions: W: 32 cm x H: 63 cm. Counter display rotating carousel stand. Complete with starter stock of 108 Trim Clip ESSENTIALS refill packs (3 of each pack).

The Trim Clip ESSENTIALS Counter Display comes with a header card featuring actual size trim Clip images. The header card makes it quick and easy to choose the right trim clips and also aids in replenishing stock, doubling up as a planogram for the stand too

Part No.	Qty	Description
YKIT2	1 Kit	Counter Display Kit



## DORMER 'A723' Spot Weld Drills

HSCo. Bronze finish.

Part No.	Qty	Ø	Length
DDW1	1	6.0 mm	66 mm
DDW2	1	6.0 mm	93 mm
DDW3	1	8.0 mm	79 mm
DDW4	1	8.0 mm	117 mm



# S·A·S Valeting Range

**SAS**

## S·A·S Pre-Wash Snow Foam

Highly concentrated, high foaming, powerful cleaning formula. Safe to use on all types of paintwork and a great way to prepare your vehicle for washing.

- **Highly concentrated - dilute to a ratio of 9 parts water to 1 part product**
- **pH neutral formula breaks down excess dirt, dust, and grime to leave behind a prepped surface for washing**
- **Multi-Purpose Application - can be used with a foam gun, pressure washer foam lance and through a pump sprayer**



Part No.	Qty	Description
SAS2517A	1	500ml Bottle

**SAS**

## S·A·S Car Care Shampoo

A luxurious, high concentration car shampoo. With a dilution ratio of 1900:1 - only 12ml cleans an average sized car.

- **Dilution ratio of 1900:1**
- **High foaming lubrication prevents scratching paintwork**
- **Fully compatible with all types of waxes, sealants and ceramic coatings**



Part No.	Qty	Description
SAS2511A	1	500ml Pump Dispenser

**SAS**

## S·A·S Concentrated Wash & Wax

A concentrated shampoo and wax that's strong enough to cut through dirt and road film, while gentle enough not to harm the existing layer of protection on your car.

- **Cleans, shines and protects in one easy step**
- **Between 1:400 and 1:800 dilution ratio - add 2 caps to every 10 litres of water**
- **Special lubricants and waxes provide a smooth glide feel between your wash media and the paint surface**
- **Protects paintwork**



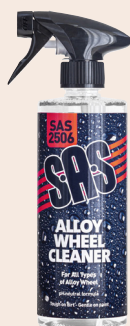
Part No.	Qty	Description
SAS2545A	1	500ml Bottle

**SAS**

## S·A·S Alloy Wheel Cleaner

Offers a deep rich clean to your vehicle's wheels, without damaging your sealants.

- **Acid-free**
- **pH neutral**
- **Safe for use on all types of alloy wheels**
- **Tough on dirt but gentle on paint**



Part No.	Qty	Description
SAS2506A	1	500ml Trigger Spray

**SAS**

## S·A·S Glass Cleaner

Specially formulated to be safe to use on tinted glass, it leaves behind a streak-free finish and hydrophobic protection.

- **Cleans all glass, mirrored surfaces, lights and chrome trims**



Part No.	Qty	Description
SAS2516A	1	500ml Trigger Spray

**SAS**

## S·A·S Cockpit & Trim Shine

Provides the perfect finish to all plastics, rubber trims and tyres leaving behind a protective barrier that is resistant to road debris.

- **Fast drying**
- **Leaves a protective gloss coating**
- **Highly resistant to road debris**



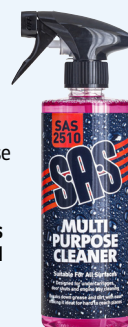
Part No.	Qty	Description
SAS2515A	1	500ml Trigger Spray

**SAS**

## S·A·S Multi Purpose Cleaner

A professional, solvent-free, multi-purpose cleaner designed to clean all exterior and interior automotive surface materials quickly and safely.

- **Highly effective on all hard and soft surfaces**
- **Designed for undercarriages, door shuts and engine bay cleaning**
- **Breaks down grease and dirt with ease making it ideal for hard to reach places**



Part No.	Qty	Description
SAS2510A	1	500ml Trigger Spray

**SAS**

## S·A·S Tyre Shine Gel

High gloss tyre sealant. Containing high grade silicone and white oil - leaves tyres looking replenished and new. This highly effective, long lasting formula will protect your tyre wall from cracking and browning.

- **Long lasting formula**
- **Leaves tyres looking as good as new**
- **Protects tyre wall from cracking and browning**



Part No.	Qty	Description
SAS2543A	1	500ml Flip Top Bottle

**SAS**

## S·A·S Heavy Cutting Paste (Stage 1 of 3)

The first of three stages of cutting compounds. Designed as an aggressive stage of polishing. It will remove scratches of 1200 grit sandpaper and swirl marks with ease, preparing for our Medium Cutting Paste.

- **Formulated with high cutting abrasives and fillers**
- **Contains kaolin clays to help refine, restore and cleanse your vehicle's paintwork**



Part No.	Qty	Description
SAS2501A	1	500ml Flip Top Bottle

**SAS**

## S·A·S Medium Cutting Paste (Stage 2 of 3)

The second of three stages of cutting compounds. Formulated with diminishing abrasive chemistry. This means the particles of abrasive start off large, getting smaller the more you work with them - in effect lowering the cutting power over time.

- **Refines, restores and cleanses vehicle paintwork**
- **Contains the highest grade of fillers and kaolin clays**
- **Helps to even out the deeper cuts of our Heavy Cutting Paste in preparation for our Fine Cutting Paste**



Part No.	Qty	Description
SAS2502A	1	500ml Flip Top Bottle

**SAS**

## S·A·S Fine Cutting Paste (Stage 3 of 3)

The final of three stages of cutting compounds. Formulated with diminishing abrasive chemistry. This means the abrasive particles get smaller the more they are worked into the paintwork. This effectively means the cutting power of the compound reduces whilst you're using it, offering a more even and gradual application.

- **Contains the highest grade of fillers and kaolin clays**
- **Refines and cleanses your vehicle's paintwork**
- **Designed as the final stage of polishing**



Part No.	Qty	Description
SAS2503A	1	500ml Flip Top Bottle

**SAS**

## S·A·S High Gloss Polish

All-in-one wax and polish. Essential for any detailing enthusiast. Contains special abrasives and fillers to help remove paintwork defects.

- **Infused with the finest grade Brazilian carnauba wax**
- **Long term protection**
- **High-gloss finish**
- **Protects against road debris**
- **UV protection**



Part No.	Qty	Description
SAS2508A	1	500ml Pump Dispenser

# Vehicle Deodorising & Cleaning

**SAS**



## S-A-S Detailing Pack - Exterior

Part No.	Qty	Description
<b>SASVP1</b>	Set of 6	<b>Exterior Pack</b>
2 x 500ml Pre-Wash Snow Foam, 500ml Concentrated Wash & Wax, 1 x 500ml Care Care Shampoo, 500ml Alloy Wheel Cleaner		

**SAS**



## S-A-S Detailing Pack - Interior/Exterior

Part No.	Qty	Description
<b>SASVP2</b>	Set of 6	<b>Interior/Exterior Pack</b>
2 x 500ml Glass Cleaner, 500ml Cockpit & Trim Shine, 1 x 500ml Multi Purpose Cleaner, 500ml Tyre Shine Gel		

**SAS**



## S-A-S Detailing Pack - Exterior Polish

Part No.	Qty	Description
<b>SASVP3</b>	Set of 6	<b>Exterior Polish Pack</b>
2 x 500ml High Gloss Polish, 500ml Fine Cutting Paste, 1 x 500ml Medium Cutting Paste, 500ml Heavy Cutting Paste		



## NILCO 'Power Fresh' Air Fresheners

'Power Blast' aerosol provides high volume burst of fragrance. For industrial or janitorial applications. Helps eliminates odours in large areas.

Ideal for:

- PSVs.
- Meeting Rooms.
- Refuse Areas.
- Conference Halls.
- Warehouses.
- Changing Rooms & Toilets.

Part No.	Qty	Size	Fragrance
<b>NIL605</b>	1	750ml Aerosol	<b>Spring</b>
<b>NIL606</b>	1	750ml Aerosol	<b>Cranberry</b>
<b>NIL607</b>	1	750ml Aerosol	<b>Lavender</b>



## LITTLE TREES Air Fresheners - 'Black Ice'

The original 'MAGIC TREE'. Men's cologne fragrance.

- Ideal for inconspicuous use on black car interiors.

Part No.	Box of	Description
<b>VC663</b>	24	<b>Black Ice</b>



## LITTLE TREES Air Fresheners

The original 'MAGIC TREE'. Assorted Fragrances

Part No.	Qty	Description
<b>VC660</b>	Box of 24	<b>Display Box</b>
4 x New Car Scent, 4 x Forest Fresh, 4 x Black Ice, 4 x Arctic White, 8 x Vanillaroma.		



## Telescopic Wash Brush

Soft bristles with flow-through handle. Length: 100 cm closed, extends to 170 cm (5 ft 8").

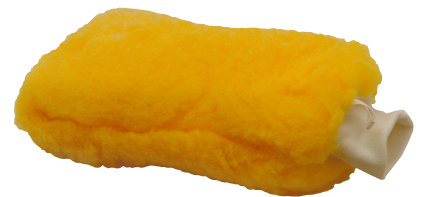
Part No.	Qty	Description
<b>WB90</b>	1	<b>Telescopic Wash Brush</b>



## Telescopic Wash Brush - Brush Head

Soft bristles.

Part No.	Qty	Description
<b>WB90H</b>	1	<b>Replacement Brush Head</b>



## Extra Large Professional Wash Mitt

Made from simulated sheep wool.

- Trade quality.

Part No.	Qty	Description
<b>WC15</b>	1	<b>Professional Wash Mitt</b>



## Jumbo Sponges

Synthetic sponge.

- Designed for professional use.

Part No.	Qty	Approx. Dimensions.
<b>WC17</b>	12	<b>250 x 120 x 70 mm</b>



# Vehicle Cleaning



## Microfibre Cloths

Trade size.

- Heavy duty micro fibre.

Part No.	Pack of	Description
<b>WC18</b>	10	<b>Micro Fibre Cloths</b>



## Large Ultra Fine Microfibre Glass Towel

Designed for professional use.

- Ultra fine silky shine finish.
- Perfect for cleaning glass.

Part No.	Qty	Size
<b>WC11</b>	1	<b>400 x 480 mm</b>



## 'Water Wizard' Waffle Drying Towel

Designed for professional use.

- Leaves a streak free finish.
- Dry a car in half the time!
- Double the absorption of standard towels.

Part No.	Qty	Size
<b>WC12</b>	1	<b>560 x 760 mm</b>



## Microfibre Drying Towel - Large Size

Long pile side for drying with short pile on the other side for detailing.

- Machine washable.
- Super soft edging will not scratch.
- Micro fibre technology attracts and holds on to dirt.

Part No.	Qty	Size
<b>WC10</b>	1	<b>600 x 800 mm</b>



## Microfibre Drying Towel - Extra Large

Designed for professional use. High pile side for drying, short pile side for detailing.

- Absorbs 8 times its weight in water
- Super soft edging, will not scratch
- Low lint and clear coat safe

Part No.	Qty	Size
<b>WC19</b>	1	<b>600 x 1000 mm</b>



## Professional Chamois Leather

Made from high quality New Zealand leather.

Part No.	Qty	Size
<b>WC16</b>	1	<b>2.25 ft<sup>2</sup></b>



## Professional PVA Non-Perforated Synthetic Chamois

Mesh reinforced. Rot proof.

- Machine washable.
- More durable than a chamois leather.
- Soft and long lasting with high absorption.

Part No.	Qty	Size
<b>WC14</b>	1	<b>660 x 430 mm</b>



## Ready Mix Screenwash 5L

Pour into the washer bottle and go!

Highly concentrated formula, cleans without smearing.

- Lowest working temperature: -4°C.

Part No.	Qty	Size
<b>VC136A</b>	1	<b>5 Litre Container</b>



## S-A-S Concentrated Screen Wash

Designed with powerful detergents and an anti-freeze agent to prevent washer jets freezing in the wintertime, and to clear summer fly squash.

- Lowest working temperature: -7.6°C.

Part No.	Pack of	Size
<b>SAS1060/2</b>	2	<b>5 Litre Containers</b>

## 5-in-1 Disposable Vehicle Interior Protection Set

Ideal for use by valeters and in garages to protect customer's vehicle interior whilst performing an M.o.T, service or general valet.

Part No.	Qty	Description
<b>BAG51</b>	100 Kits	<b>5-in-1 Protection Kits</b>

Kit includes:  
 1 x Disposable car seat cover,  
 1 x Disposable elasticated steering wheel cover,  
 1 x Disposable paper floor mat,  
 1 x Disposable gear stick cover,  
 1 x Disposable hand brake cover



# Vehicle Additives

## CATACLEAN

**Petrol  
Formula**

### CATACLEAN Petrol

Improves fuel economy, reduces emissions, restores performance and extends the life of engine and exhaust parts.

- Safe for all petrol and hybrid vehicles
- Protects and maintains catalytic converters

Part No.	Qty	Size
VC250A	1	500ml Bottle
VC250	6	500ml Bottles



## CATACLEAN

**Diesel  
Formula**

### CATACLEAN Diesel

Improves fuel economy, reduces emissions, restores performance and extends the life of engine and exhaust parts.

- Reduces risk of diesel particulate filter (DPF) clogging
- Protects and maintains catalytic converters

Part No.	Qty	Size
VC251A	1	500ml Bottle
VC251	6	500ml Bottles



## CATACLEAN

**Hybrid  
Formula**

### CATACLEAN Hybrid

Improves fuel economy, reduces emissions, restores performance and extends the life of engine and exhaust parts.

- Reduces risk of petrol particulate filter (PPF) clogging
- Protects and maintains catalytic converters

Part No.	Qty	Size
VC252A	1	500ml Bottle
VC252	6	500ml Bottles



## CATACLEAN

**Special  
Formula  
for all  
engines**

**FREE 1L  
JUG with  
every 5 litre  
Workshop  
pack\***



### CATACLEAN Workshop

Improves fuel economy, reduces emissions, restores performance and extends the life of engine and exhaust parts.

- Safe for all diesel, petrol and hybrid vehicles
- Protects and maintains catalytic converters
- While stocks last.

Part No.	Qty	Size
VC253	1	5L Container

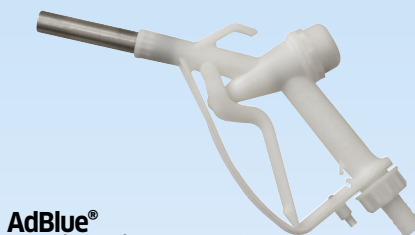


### AdBlue® Solution

ISO 22241. Suits all Euro 4/5/6 diesel engines. For AdBlue® diesel vehicles, ready to use. 32.5% solution of pure urea in demineralised water.

- Freezing point of -11°C
- Pouring spout included
- \* Please allow 5-7 days delivery on this product.

Part No.	Qty	Size
ADB10	1	10 Litres
ADB20	1	20 Litres
ADB205*	4	210 Litres



### AdBlue® Plastic Delivery Nozzle

- Plastic.
- 19 mm Spout
- 3/4" BSP

Part No.	Qty	Description
ADB301	1	Delivery Nozzle



### AdBlue® Gravity Hose Kit

Self assembly.

Part No.	Qty	Length
ADB302	1	3 m Hose

**Granville**



### De-ionised Water

Conforms to BS4974. Purified of dissolved minerals and salts through de-ionisation and recognised as the best choice for maintaining lead acid batteries.

- Does not conduct electricity and will not hinder battery performance

Part No.	Qty	Size
VC805	1	5 Ltr
VC825	1	25 Ltr



### Measuring Jug

Polythene.

Part No.	Qty	Capacity
JUG3	1	5 Litre



### Measuring Jugs

Complete with lid and removable spout with stopper.

Part No.	Qty	Capacity
JUG31	1	1 Litre
JUG32	1	2 Litre
JUG33	1	5 Litre



# OnHand Disposable Gloves



## OnHand 'Plus' HD Blue Nitrile Gloves

Class 1 medical grade (EN 455) & food contact approved (EN 1186). Approved to EN374-2 & EN374-3.

- Latex and powder free
- Micro-textured for improved grip
- High tensile strength with a high level of dexterity

Part No.	Qty	Colour	Size
GL491	10 x Boxes of 100	Blue	M
GL492	10 x Boxes of 100	Blue	L
GL493	10 x Boxes of 100	Blue	XL



## OnHand Blue Nitrile Gloves

Class 1 medical grade (EN 455) & food contact approved (EN 1186).

- Latex and powder free
- High tensile strength

Part No.	Qty	Colour	Size
GL590	10 x Boxes of 100	Blue	S
GL591	10 x Boxes of 100	Blue	M
GL592	10 x Boxes of 100	Blue	L
GL593	10 x Boxes of 100	Blue	XL



Textured for better grip

## OnHand 'Grip Plus' Orange Nitrile Gloves

Class 1 medical grade (EN 455) & food contact approved (EN 1186). Approved to EN374-2 & EN374-3.

- Latex and powder free
- All-over textured pattern with outstanding grip properties
- High tensile strength and puncture resistance

Part No.	Qty	Colour	Size
GL886	10 x Boxes of 90	Orange	M
GL887	10 x Boxes of 90	Orange	L
GL889	10 x Boxes of 90	Orange	XL
GL890	10 x Boxes of 90	Orange	XXL



## OnHand 'Plus' HD Black Nitrile Gloves

Class 1 medical grade (EN 455) & food contact approved (EN 1186). Approved to EN374-2 & EN374-3.

- Latex and powder free
- Micro-textured for improved grip
- High tensile strength with a high level of dexterity

Part No.	Qty	Colour	Size
GL494	10 x Boxes of 100	Black	M
GL495	10 x Boxes of 100	Black	L
GL496	10 x Boxes of 100	Black	XL



## OnHand Black Nitrile Gloves

Class 1 medical grade (EN 455) & food contact approved (EN 1186).

- Latex and powder free
- High tensile strength

Part No.	Qty	Colour	Size
GL594	10 x Boxes of 100	Black	M
GL595	10 x Boxes of 100	Black	L
GL596	10 x Boxes of 100	Black	XL



Textured for better grip

## OnHand 'Grip Plus' Black Nitrile Gloves

Class 1 medical grade (EN 455) & food contact approved (EN 1186). Approved to EN374-2 & EN374-3.

- Latex and powder free
- All-over textured pattern with outstanding grip properties
- High tensile strength and puncture resistance

Part No.	Qty	Colour	Size
GL896	10 x Boxes of 90	Black	M
GL897	10 x Boxes of 90	Black	L
GL899	10 x Boxes of 90	Black	XL
GL900	10 x Boxes of 90	Black	XXL



## GRIPPAZ Orange Grip Gloves

This glove is designed to cover a broad spectrum of industrial uses including automotive, assembly, paint spraying, cleaning, electro-plating asbestos removal and janitorial.

- Ambidextrous
- CE Level 5 Dexterity
- Ergonomic Grip
- Chemical Resistant

Part No.	Qty	Colour	Size
VC619	Box of 50	Orange	M
VC620	Box of 50	Orange	L
VC621	Box of 50	Orange	XL
VC622	Box of 50	Orange	XXL
VC626	10 x Boxes of 50	Orange	M
VC627	10 x Boxes of 50	Orange	L
VC628	10 x Boxes of 50	Orange	XL
VC629	10 x Boxes of 50	Orange	XXL



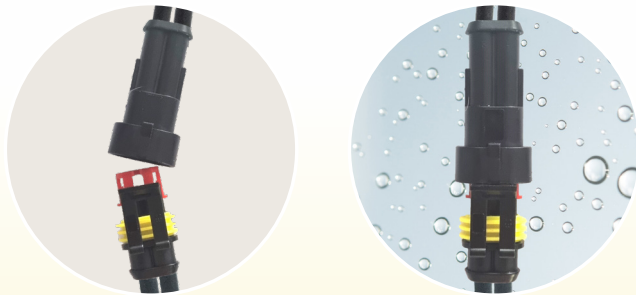
Patented fish scale grip

# Superseal Connector Kits

Ideal for applications where a waterproof joint/seal is required for electrical cabling.

The system comprises of the connector, the pin and the seal and is suitable for cable sizes from 0.5 mm<sup>2</sup> to 1.5 mm<sup>2</sup>.

Use Part No. **RG10330** for a professional crimp.



## Assorted Box of Superseal Connectors

Part No.	Qty	Box of
<b>AB520</b>	1	<b>424 Pieces</b>

6 x 1-way Female. 6 x 1-way Male. 12 x 2-way Female. 12 x 2-way Male. 5 x 3-way Female. 5 x 3-way Male. 4 x 4-way Female. 4 x 4-way Male. 3 x 5-way Female. 3 x 5-way Male. 2 x 6-way Female. 2 x 6-way Male. 180 x Yellow Rubber Seals. 90 x 1.5 mm Female Pin. 90 x 1.5 mm Male Pin.

### 6 Piece Kit

#### Superseal 1-way Kit 6pc

Part No.	Qty	Contacts
<b>ET550</b>	1 Kit	<b>1-way</b>
Contains: 1x 1-way male and 1x 1-way female connector, 1x male and 1x female pin and 2x rubber seals.		

### 14 Piece Kit

#### Superseal 3-way Kit 14pc

Part No.	Qty	Contacts
<b>ET552</b>	1 Kit	<b>3-way</b>
Contains: 1x 3-way male and 1x 3-way female connector, 3x male and 3x female pins and 6x rubber seals.		

### 22 Piece Kit

#### Superseal 5-way Kit 22pc

Part No.	Qty	Contacts
<b>ET554</b>	1 Kit	<b>5-way</b>
Contains: 1x 5-way male and 1x 5-way female connector, 5x male and 5x female pins and 10x rubber seals.		

### 10 Piece Kit

#### Superseal 2-way Kit 10pc

Part No.	Qty	Contacts
<b>ET551</b>	1 Kit	<b>2-way</b>
Contains: 1x 2-way male and 1x 2-way female connector, 2x male and 2x female pins and 4x rubber seals.		

### 18 Piece Kit

#### Superseal 4-way Kit 18pc

Part No.	Qty	Contacts
<b>ET553</b>	1 Kit	<b>4-way</b>
Contains: 1x 4-way male and 1x 4-way female connector, 4x male and 4x female pins and 8x rubber seals.		

### 26 Piece Kit

#### Superseal 6-way Kit 26pc

Part No.	Qty	Contacts
<b>ET555</b>	1 Kit	<b>6-way</b>
Contains: 1x 6-way male and 1x 6-way female connector, 6x male and 6x female pins and 12x rubber seals.		



## RG TOOLS Superseal Ratchet Crimping Tool

Complete with one set of H2 and one set of H3 jaws. Supplied in a robust plastic storage case.

- Ergonomically designed handle for ease of use
- Ratchet ensures correct crimping pressure
- H2 jaws suitable for 0.35 mm<sup>2</sup> - 0.5 mm<sup>2</sup> and 1.5 mm<sup>2</sup> cable
- H3 jaws suitable for 0.75 mm<sup>2</sup> and 1.0 mm<sup>2</sup> cable

Part No.	Qty	Description
<b>RG10330</b>	1	<b>Ratchet Crimping Pliers</b>



## Superseal Terminals

Replacement terminals for Part Nos. ET550, ET551, ET552, ET553, ET554 and ET555.

Part No.	Pack Qty	Type	Size
<b>ET556</b>	100	<b>Female</b>	1.5 mm
<b>ET557</b>	100	<b>Male</b>	1.5 mm

## Superseal Yellow Seals

Replacement seals for Part Nos. ET550, ET551, ET552, ET553, ET554 and ET555.

Part No.	Pack Qty	Colour
<b>ET558</b>	100	<b>Yellow</b>



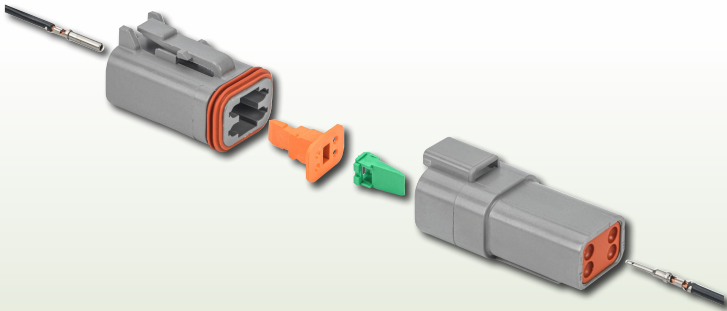


# DT Connector Kits

Heavy-duty waterproof connectors which are designed to prevent dirt, grit, moisture and damp damaging wiring joints/crimped connections.

The system comprises of the connector, the pin and the locking wedge and is suitable for cable sizes from 0.5 mm<sup>2</sup> to 1.5 mm<sup>2</sup>.

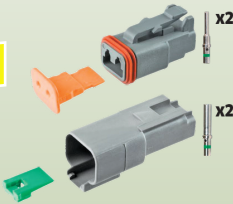
Use Part No. **RG10333** for a professional crimp.



## Assorted Box of DT Connectors

Part No.	Qty	Box of
<b>AB521</b>	1	<b>152 Pieces</b>
2 pin, 3 pin, 4 pin, 6 pin, 8 pin, 12 pin, plus wedges, locking plates, blanking stems plus male & female terminals.		

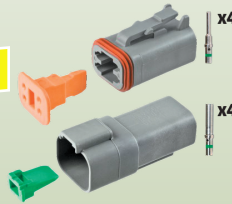
### 8 Piece Kit



#### DT Connector 2-way Kit 8pc

Part No.	Qty	Contacts
<b>ET560</b>	1 Kit	<b>2-way</b>
Contains: 1x 2-way male and 1x 2-way female connector, 2x male and 2x female pins and 1x male and 1x female wedge.		

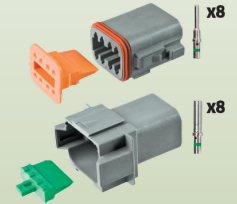
### 12 Piece Kit



#### DT Connector 4-way Kit 12pc

Part No.	Qty	Contacts
<b>ET562</b>	1 Kit	<b>4-way</b>
Contains: 1x 4-way male and 1x 4-way female connector, 4x male and 4x female pins and 1x male and 1x female wedge.		

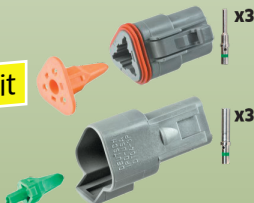
### 20 Piece Kit



#### DT Connector 8-way Kit 20pc

Part No.	Qty	Contacts
<b>ET564</b>	1 Kit	<b>8-way</b>
Contains: 1x 8-way male and 1x 8-way female connector, 8x male and 8x female pins and 1x male and 1x female wedge.		

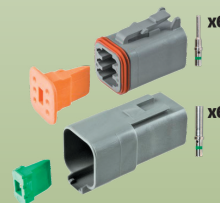
### 10 Piece Kit



#### DT Connector 3-way Kit 10pc

Part No.	Qty	Contacts
<b>ET561</b>	1 Kit	<b>3-way</b>
Contains: 1x 3-way male and 1x 3-way female connector, 3x male and 3x female pins and 1x male and 1x female wedge.		

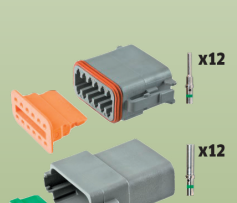
### 16 Piece Kit



#### DT Connector 6-way Kit 16pc

Part No.	Qty	Contacts
<b>ET563</b>	1 Kit	<b>6-way</b>
Contains: 1x 6-way male and 1x 6-way female connector, 6x male and 6x female pins and 1x male and 1x female wedge.		

### 28 Piece Kit



#### DT Connector 12-way Kit 28pc

Part No.	Qty	Contacts
<b>ET565</b>	1 Kit	<b>12-way</b>
Contains: 1x 12-way male and 1x 12-way female connector, 12x male and 12x female pins and 1x male and 1x female wedge.		



#### RG TOOLS DT/DTM Crimping Tool

- Crimping tool for male and female DT/DTM terminals.
- Soft grip ergonomic handles
- 4-way jaw action offers a professional crimp on the terminal
- For cable diameter: 0.5 mm<sup>2</sup> - 1.5 mm<sup>2</sup>

Part No.	Qty	Description
<b>RG10333</b>	1	<b>DT/DTM Crimping Tool</b>



#### DT Connector Terminals

Replacement terminals for Part Nos. ET560, ET561, ET562, ET563, ET564 and ET565.

Part No.	Pack Qty	Type
<b>ET566</b>	50	<b>Female</b>
<b>ET567</b>	50	<b>Male</b>



#### DT Connector Housing Blanks

For use with DT connectors to seal unused openings.

Part No.	Pack Qty	Description
<b>ET568</b>	50	<b>Blanking Seal</b>

# DTM Connector Kits & High Current Connectors

Slightly smaller heavy-duty waterproof connectors with miniature contacts allow easy access when space is limited.

The system comprises of the connector, the pin and the locking wedge and is suitable for cable sizes from 0.5 mm<sup>2</sup> to 1.5 mm<sup>2</sup>.

Use Part No. **RG10333** for a professional crimp.



## Assorted Box of DTM Connectors

Part No.	Qty	Box of
<b>AB522</b>	1	<b>126 Pieces</b>

Kit contains: 2 pin, 3 pin, 4 pin, 6 pin, 8 pin, 12 pin, plus wedges, locking plates, blanking stems plus male & female terminals.



### 8 Piece Kit

#### DTM Connector 2-Way Kit 8pc

Part No.	Qty	Contacts
<b>ET570</b>	1 Kit	<b>2-Way</b>

Contains: 1x 2-way male and 1x 2-way female connector, 2x male and 2x female pins and 1x male and 1x female wedge.

### 12 Piece Kit

#### DTM Connector 4-Way Kit 12pc

Part No.	Qty	Contacts
<b>ET572</b>	1 Kit	<b>4-Way</b>

Contains: 1x 4-way male and 1x 4-way female connector, 4x male and 4x female pins and 1x male and 1x female wedge.

### 20 Piece Kit

#### DTM Connector 8-Way Kit 20pc

Part No.	Qty	Contacts
<b>ET574</b>	1 Kit	<b>8-Way</b>

Contains: 1x 8-way male and 1x 8-way female connector, 8x male and 8x female pins and 1x male and 1x female wedge.

### 10 Piece Kit

#### DTM Connector 3-Way Kit 10pc

Part No.	Qty	Contacts
<b>ET571</b>	1 Kit	<b>3-Way</b>

Contains: 1x 3-way male and 1x 3-way female connector, 3x male and 3x female pins and 1x male and 1x female wedge.

### 16 Piece Kit

#### DTM Connector 6-Way Kit 16pc

Part No.	Qty	Contacts
<b>ET573</b>	1 Kit	<b>6-Way</b>

Contains: 1x 6-way male and 1x 6-way female connector, 6x male and 6x female pins and 1x male and 1x female wedge.

### 28 Piece Kit

#### DTM Connector 12-Way Kit 28pc

Part No.	Qty	Contacts
<b>ET575</b>	1 Kit	<b>12-Way</b>

Contains: 1x 12-way male and 1x 12-way female connector, 12x male and 12x female pins and 1x male and 1x female wedge.



#### RG TOOLS DT/DTM Crimping Tool

Crimping tool for male and female DT/DTM terminals.

- Soft grip ergonomic handles
- 4-way jaw action offers a professional crimp on the terminal
- For cable diameter: 0.5 mm<sup>2</sup> - 1.5 mm<sup>2</sup>

Part No.	Qty	Description
<b>RG10333</b>	1	<b>DT/DTM Crimping Tool</b>

#### DTM Connector Housing Blanks

For use with DTM connectors to seal unused openings.

Part No.	Pack Qty	Description
<b>ET578</b>	50	<b>Blanking Seal</b>

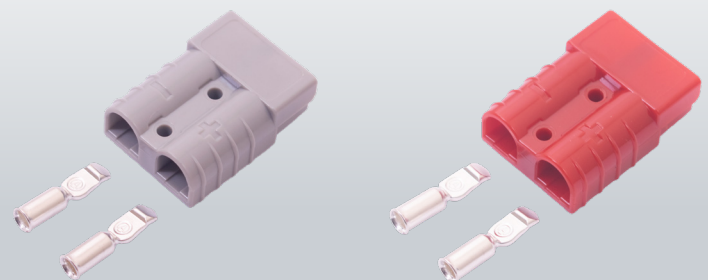
#### DTM Connector Terminals

Replacement terminals for Part Nos. ET570, ET571, ET572, ET573, ET574 and ET575.

Part No.	Pack Qty	Type
<b>ET576</b>	50	<b>Male</b>
<b>ET577</b>	50	<b>Female</b>

## High Current Connectors

Genderless high current power connectors used to connect and disconnect heavy duty cables quickly and safely.



#### High Current Connector Grey

Genderless high current power connectors used to connect and disconnect heavy duty cables quickly and safely.

Housings come complete with two heavy duty terminals.

Part No.	Qty	Amperage	Cable Size
<b>ET603</b>	1 Kit	<b>50A</b>	16mm <sup>2</sup>
<b>ET604</b>	1 Kit	<b>175A</b>	60mm <sup>2</sup>
<b>ET605</b>	1 Kit	<b>350A</b>	70mm <sup>2</sup>

#### High Current Connector Red

Genderless high current power connectors used to connect and disconnect heavy duty cables quickly and safely.

Housings come complete with two heavy duty terminals.

Part No.	Qty	Amperage	Cable Size
<b>ET600</b>	1 Kit	<b>50A</b>	16mm <sup>2</sup>
<b>ET601</b>	1 Kit	<b>175A</b>	60mm <sup>2</sup>
<b>ET602</b>	1 Kit	<b>350A</b>	70mm <sup>2</sup>



# Auto Cable, Terminals & Accessories



**Commercial Thick Wall Auto Cable, Flat Twin - 2 x 1.00 mm<sup>2</sup>**  
2 x 14/0.30 mm, 8.75 amps.  
Designed for commercial applications.

Part No.	Length	Outer Colour
<b>EC7020</b>	30 m	<b>Black</b>



**Commercial Thick Wall Auto Cable, Flat Twin - 2 x 2.00 mm<sup>2</sup>**  
2 x 28/0.30 mm, 17.5 amps.  
Designed for commercial applications.

Part No.	Length	Outer Colour
<b>EC7030</b>	30 m	<b>Black</b>



**Commercial Thick Wall Auto Cable, Single - 1.00 mm<sup>2</sup>**  
14/0.30 mm, 8.75 amps.  
Designed for commercial applications.

Part No.	Length	Colour
<b>EC2000BK</b>	50 m	<b>Black</b>
<b>EC2000RE</b>	50 m	<b>Red</b>



**Commercial Thick Wall Auto Cable, Single - 2.00 mm<sup>2</sup>**  
28/0.30 mm, 17.5 amps.  
Designed for commercial applications.

Part No.	Length	Colour
<b>EC3000BK</b>	50 m	<b>Black</b>
<b>EC3000RE</b>	50 m	<b>Red</b>



## Cable Ties - Black

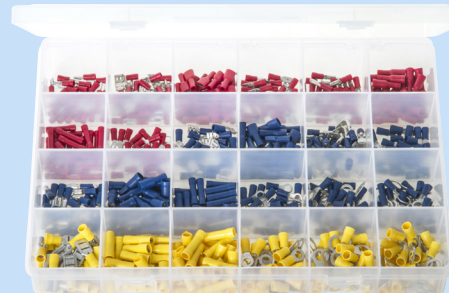
Standard type. Manufactured from Nylon 6.6.

Part No.	Pack of	Length x Width
<b>ECT210</b>	100	<b>100 mm x 2.5 mm</b>
<b>ECT420</b>	100	<b>200 mm x 4.8 mm</b>
<b>ECT437</b>	100	<b>370 mm x 4.8 mm</b>
<b>ECT737</b>	100	<b>370 mm x 8.0 mm</b>
<b>ECT943</b>	100	<b>430 mm x 9.0 mm</b>



## 'Max Box' Assortment of Terminals Insulated - Blue

Part No.	Qty	Box of
<b>AB502</b>	1	<b>600 Pieces</b>
2 x Push-on Females: 4.8, 6.3 mm. 2 x Push-on Females, Fully Insulated: 4.8, 6.3 mm. 1 x Piggyback: 6.3 mm. 1 x Push-on Male: 6.3 mm. 1 x Bullet: Ø 5.0 mm. 1 x Receptacle Socket: Ø 5.0 mm. 1 x Butt Connector: 4.0 mm O.D. 2 x Forks: 3.7 mm (4BA), 5.2 mm (2BA). 1 x Blade (18 mm): 2.3 mm. 1 x Pin (12 mm): Ø1.9 mm. 5 x Rings: Ø 4.3 mm, 5.3 mm (2BA), 6.4 mm (1/4"), 8.4 mm (5/16"), 10.5 mm (3/8").		



## 'Max Box' Assortment of Terminals Insulated

Part No.	Qty	Box of
<b>AB509</b>	1	<b>600 Pieces</b>
4 x Push-on Females: 2.8 mm Red, 6.3 mm Red, 6.3 mm Blue, 9.5 mm Yellow. 3 x Push-on Females, Fully Insulated: 6.3 mm Red, 6.3 mm Blue, 6.3 mm Yellow. 1 x Piggyback: 6.3 mm Blue. 2 x Push-on Males: 6.3 mm Red, 6.3 mm Blue. 2 x Bullets: Ø 4.0 mm Red, 5.0 mm Blue. 2 x Receptacle Sockets: Ø 4.0 mm Red, 5.0 mm Blue. 3 x Butt Connectors: 3.3 mm Red, 4.0 mm Blue, 5.5 mm O.D. Yellow. 7 x Rings: Ø 5.3 mm (2BA) Red, 5.3 mm (2BA) Blue, 6.4 mm (1/4") Blue, 6.4 mm (1/4") Yellow, 8.4 mm (5/16") Blue, 8.4 mm (5/16") Yellow, 10.5 mm (3/8") Yellow.		



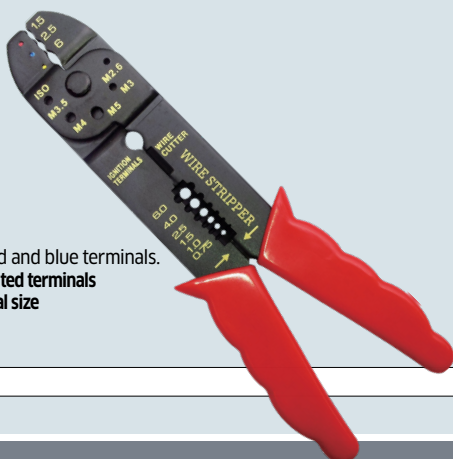
## 'Max Box' Assortment of Terminals Insulated - Red

Part No.	Qty	Box of
<b>AB501</b>	1	<b>600 Pieces</b>
3 x Push-on Females: 2.8, 4.8, 6.3 mm. 3 x Push-on Females, Fully Insulated: 2.8, 4.8, 6.3 mm. 1 x Piggyback: 6.3 mm. 1 x Push-on Male: 6.3 mm. 1 x Bullet: Ø 4.0 mm. 1 x Receptacle Socket: Ø 4.0 mm. 1 x Butt Connector: 3.3 mm. 1 x Pin (12 mm): Ø 1.9 mm. 1 x Blade (18 mm): 2.3 mm. 1 x Forks: 3.7 mm (4BA). 4 x Rings: Ø 4.3 mm, 5.3 mm (2BA), 6.4 mm (1/4"), 8.4 mm (5/16").		



## Assorted Box of Terminals Insulated - Red & Blue

Part No.	Qty	Box of
<b>AB110N</b>	1	<b>210 Pieces</b>
5 x Push-on Females: 2.8 mm Red, 4.8 mm Red, 4.8 mm Blue, 6.3 mm Red, 6.3 mm Blue. 1 x Push-on Female, Fully Insulated: 6.3 mm Blue. 2 x Push-on Males: 6.3 mm Red, 6.3 mm Blue. 2 x Bullets: Ø 4.0 mm Red, 5.0 mm Blue. 2 x Receptacle Sockets: Ø 4.0 mm Red, 5.0 mm Blue. 2 x Butt Connectors: 3.3 mm O.D. Red, 4.0 mm O.D. Blue.		

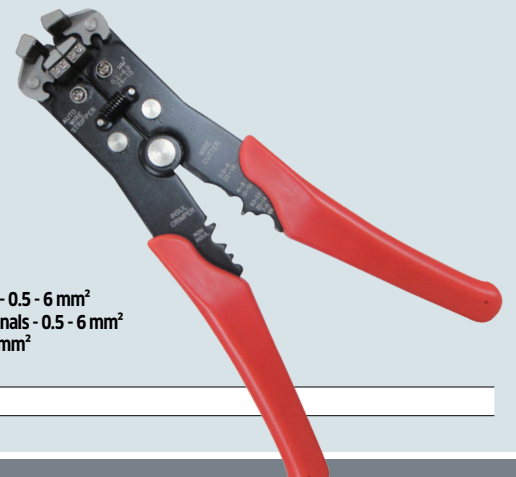


## RG TOOLS Crimping Pliers

Supplied with a selection of red and blue terminals.

- Crimps insulated and non-insulated terminals
- Colour coded to identify terminal size
- Soft grip handles

Part No.	Qty
<b>RG10331</b>	1



## RG TOOLS Wire Stripper, Cutter & Crimper

For wire: 0.2 - 6.0 mm<sup>2</sup>.

- Crimps insulated terminals - 0.5 - 6 mm<sup>2</sup>
- Crimps non-insulated terminals - 0.5 - 6 mm<sup>2</sup>
- Crimps copper lugs up to 8 mm<sup>2</sup>

Part No.	Qty
<b>RG10332</b>	1



### Red Heat Shrink Terminals, Adhesive Lined-Butt Connectors

Cable Size: 0.5 - 1.5 mm<sup>2</sup>

Part No.	Pack of	Ø
<b>ET91</b>	25	3.7 mm
<b>ET91A</b>	100	3.7 mm
<b>ET91K</b>	1,000	3.7 mm



### Yellow Heat Shrink Terminals, Adhesive Lined-Butt Connectors

Cable Size: 4.0 - 6.0 mm<sup>2</sup>

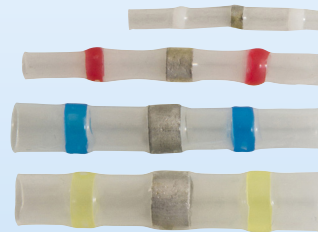
Part No.	Pack of	Ø
<b>ET93</b>	10	6.5 mm



### Blue Heat Shrink Terminals, Adhesive Lined-Butt Connectors

Cable Size: 1.5 - 2.5 mm<sup>2</sup>

Part No.	Pack of	Ø
<b>ET92</b>	25	5.0 mm
<b>ET92A</b>	100	5.0 mm
<b>ET92K</b>	1,000	5.0 mm



### Heat Shrink Butt Connectors - Solder Type

Shrink ratio: 3:1.

Part No.	Pack of	Stripe Colour	For Cable
<b>ET301</b>	10	Clear	0.1 - 0.5 mm <sup>2</sup>
<b>ET302</b>	10	Red	0.5 - 1.0 mm <sup>2</sup>
<b>ET303</b>	10	Blue	1.0 - 2.5 mm <sup>2</sup>
<b>ET304</b>	10	Yellow	2.5 - 6.0 mm <sup>2</sup>



### Assorted Box of Heat Shrink Terminals, Adhesive Lined - Red & Blue

Part No.	Qty	Box of
<b>AB125</b>	1	130 Pieces

2 x Push-on Females: 6.3 mm Red, 6.3 mm Blue.  
 2 x Push-on Males: 6.3 mm Red, 6.3 mm Blue.  
 2 x Butt Connectors: Ø 3.7 mm Red, 5.0 mm Blue.  
 4 x Rings, Standard Length: Ø 5.3 mm (2BA) Red, 6.4 mm (1/4") Red, 6.4 mm (1/4") Blue, 8.4 mm (5/16") Blue.



### Assorted Box of Heat Shrink Terminals, Adhesive Lined - Butt Connectors

Part No.	Qty	Box of
<b>AB190</b>	1	220 Pieces

3 x Colours (Ø): Red (3.7 mm), Blue (5.0 mm), Yellow (6.5 mm)



### Heat Shrink Tubing - Black

Polyolefin.  
Shrink Ratio: 2:1.

Part No.	Length	I.D. (Pre Shrink)
<b>EHS13</b>	11 m	3.2 mm
<b>EHS43</b>	15 m	6.4 mm
<b>EHS44</b>	15 m	9.5 mm



### NITTO '21A' PVC Insulation Tape

0.20 mm Tape Thickness (200 Micron).

Part No.	Pack of	Colour	Width x Length
<b>EPT21</b>	10 Rolls	Black	19 mm x 20 m



### ARCTIC HAYES 'Vortex' Brazing Torch

Fits 1 inch CGA600 thread gas cylinders (suits Part No.s VG1 & VG2).

- Lightweight tough magnesium alloy body with soft rubber hand grip
- Piezo ignition, flame regulator and safety lock

Part No.	Qty	Description
<b>VT1</b>	1	Brazing Torch



### ARCTIC HAYES 'Vortex' Map-X Gas

Suitable for all soldering and brazing applications.

- Burns up to +1150°C.

Part No.	Qty	Size
<b>VG1</b>	1	400g Cylinder



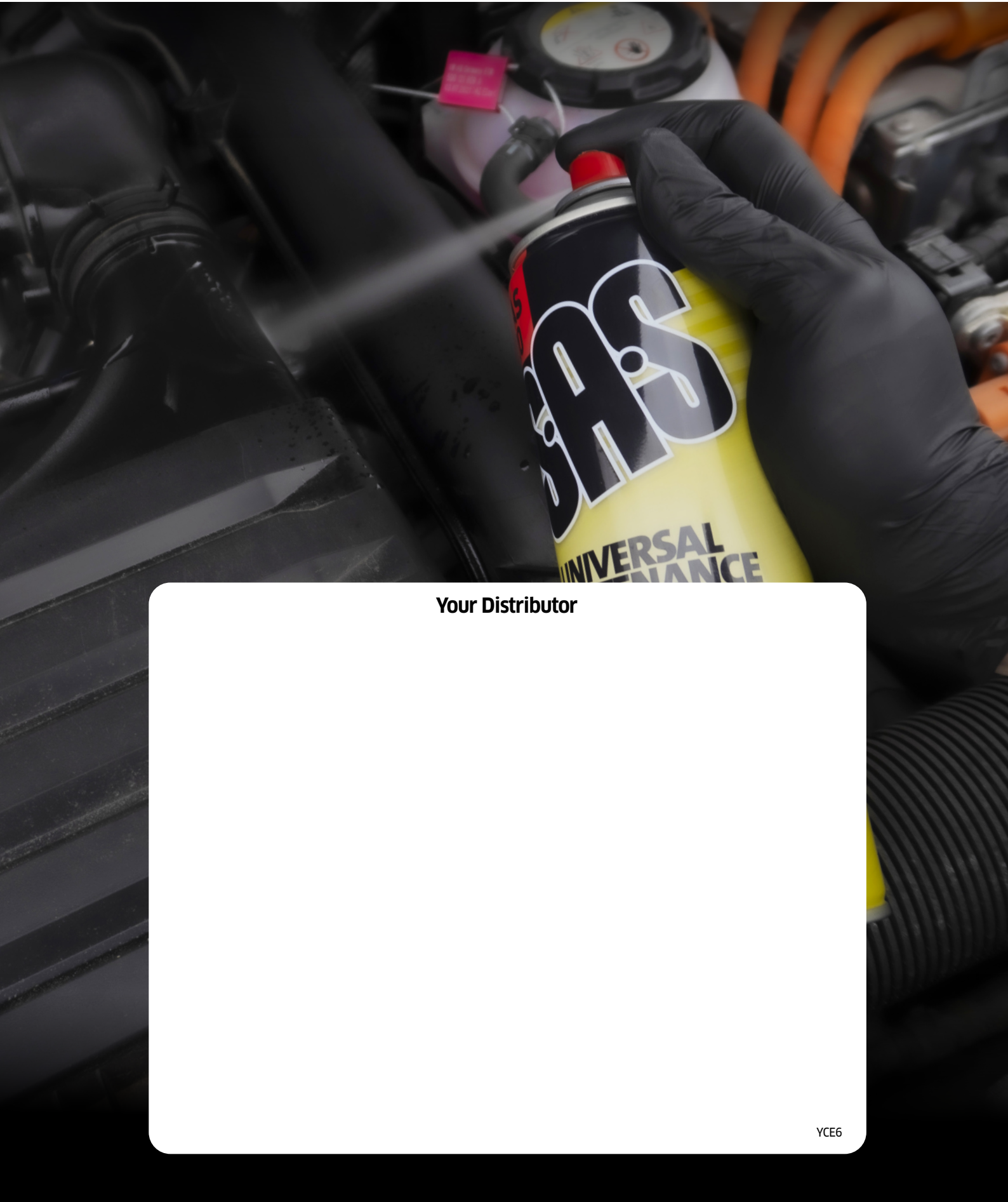
### ARCTIC HAYES 'Vortex' Propane Gas

Ideal for soldering fittings, etc.

- Burns up to 900°C+.

Part No.	Qty	Size
<b>VG2</b>	1	400g Cylinder





**Your Distributor**